

803/2-6 Birtley Place, Elizabeth Bay, NSW 2011

BresicWhitney

Apartment For Sale

Wednesday, 3 April 2024

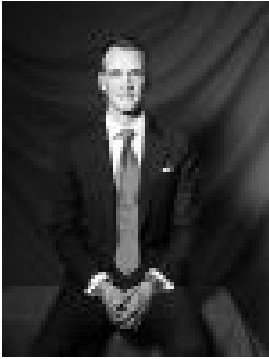
803/2-6 Birtley Place, Elizabeth Bay, NSW 2011

Bedrooms: 2

Bathrooms: 2

Parkings: 2

Type: Apartment



Josh Fleming
0413175060



Christopher Breedon
0455372089

Guide \$1,650,000

Auction Location: On site In a desirable cul-de-sac and blue-chip waterside enclave, this contemporary apartment is set in 'The Elizabeth', a well-maintained classic security building. With an easterly aspect and access to communal entertaining space, the views Sydney Harbour are impressive from the rooftop. Presented with well-maintained original interiors, it's ready to rent or enjoy, and would shine with your own touch. Free Strata Report available at bw.com.au Highlights* Wide easterly-facing apartment* Living/dine flows to a sunny balcony* Access to common rooftop gardens* Resort-style swimming pool & spa* Neat kitchen & bathroom spaces* D/washer, stone-topped vanity, tub* Double beds, master BIRs & ensuite* Internal laundry, lots of storage space* Lift from the double (tandem) parking* Elegant lobby, secure intercom access