

**803/35 Corio Street, Geelong, Vic 3220**



**Apartment For Sale**

Friday, 3 November 2023

803/35 Corio Street, Geelong, Vic 3220

**Bedrooms: 2**

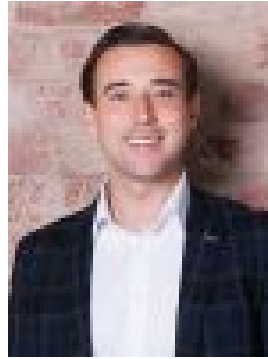
**Bathrooms: 2**

**Parkings: 1**

**Type: Apartment**



Jim Cross  
0352232040



Brock Buchanan  
0409899945

**\$1,350,000**

Resting between the heart of the city and the shores of Corio Bay, 'Cunningham Place' embodies sophisticated living through each of the 71 luxury apartments, with most enjoying uninterrupted water views across the bay and of the iconic Cunningham Pier. Designed by award-winning WMK Architecture and building to be completed by Amber Property Group, the intelligent red-brick and industrial facade provides a lasting impression, elevating its status to the new jewel in the crown. Embracing a north orientation, this luxurious apartment presents an exclusive opportunity to secure waterfront living at its finest. The spacious interiors reflect contemporary and refined elegance throughout, with two master suites that each incorporate large walk-in robes and ensuites, as well as a water vista. The open-plan living enjoys spectacular bay views through floor-to-ceiling windows, opening onto a winter garden balcony where you can embrace year-round outdoor living. Superbly positioned with four street frontages and incorporating a luxury international hotel, this development promises an unparalleled lifestyle. Residents can take advantage of the hotel's premium pool and sauna facilities, as well as an intimate theatre for film, entertainment or sport. Enjoy all of the CBD amenities at your fingertips. The finest restaurants, bars and cafes are all only moments away. Close proximity to Deakin University and the Geelong Train Station. Nearby to the Royal Geelong Yacht Club, Ferry Terminal and Eastern Beach. Display Suite located at Shop 4/6-8 Eastern Beach Road Geelong - Premium timber floors, lush carpeted bedrooms - Luxe brushed gold fixtures and finishes throughout - Kitchen with stone benchtops and stylish island bench - V-Zug oven, induction cooktop, integrated dishwasher - Ensuite One with stone benchtops, generous cabinetry, dual access - Ensuite Two with bathtub, stone benchtops and a large shower - Separate laundry - Carefully curated 'Winter Gardens' by Tract Architects - Secure basement parking for one vehicle, lift access