

81 Bluebell Drive, Craigieburn, Vic 3064



Sold House

Monday, 14 August 2023

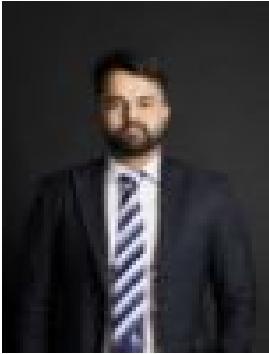
81 Bluebell Drive, Craigieburn, Vic 3064

Bedrooms: 4

Bathrooms: 2

Parkings: 2

Type: House



Jatin Mehta
0426973800



Abdul Sleman
0417117517

\$638,000

It's not always that often you find a home lathered with style, that's also situated in a convenient location. But when you see what 81 Bluebell has to offer, you won't need to continue with your property search. This beautiful single-level 4 bedroom home warmly invites you inside, as you veer through the luxurious large front yard into a spacious corridor filled with ambience and light. The colossal master suite rests at the front of the house, accompanied by a sizable walk-in-robe as well as an en-suite with an oversized shower. An open-plan living, dining and kitchen area, creating a comfortable floor-plan with plenty of privacy for all to enjoy. Features comprising: Master bedroom with an ensuite and walk-in robe Three spacious bedrooms with built in robes facilitated by a central spacious bathroom and a separate toilet Open plan living along with a separate dining area Well-equipped kitchen & stainless-steel cooking appliances including oven, range hood and cooktop, generous cupboard space Spacious laundry with backyard access Remote access double garage Covered alfresco High ceilings Ducted heating and split system air cooling Dishwasher Foxtel connection installed in living and master bedroom Outdoor power points installed for security system Shed at the back for storage Solar hot water system 6Kw premium Solar power system is installed. LED down lights Fully landscaped front yard and backyard Walking distance to Newbury primary school, child care, community centre, newly built Craigieburn Village shopping centre and easy access to highlands shopping centre, Craigieburn central, Mount Ridley College & Hume Anglican Grammar. Due diligence checklist - for home and residential property buyers - <http://www.consumer.vic.gov.au/duediligencechecklist>