

# 81 Trim Crescent, Old Noarlunga, SA 5168



## Sold House

Tuesday, 17 October 2023

81 Trim Crescent, Old Noarlunga, SA 5168

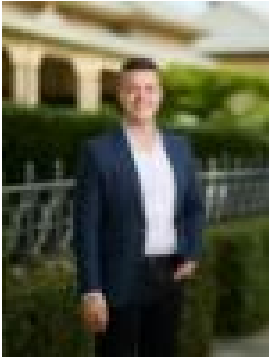
Bedrooms: 3

Bathrooms: 2

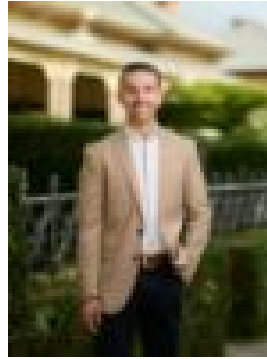
Parkings: 2

Area: 349 m2

Type: House



Cameron Bowes



Blake Willemer  
0481533863

**\$668,000**

Please contact Cameron Bowes or Blake Willemer from Ray White Seaford to discuss a viewing time. Here is a home sure to impress. 81 Trim Crescent offers fixtures and finishes that are clearly a cut above the competition. What's more, it is peacefully situated just a few minutes from McLaren Vale's world class wineries as well as stunning Fleurieu beaches, ensuring a fantastic lifestyle for the lucky buyer. The property is impeccably presented throughout. The home's three bedrooms include a very spacious premier suite that features a walk-in robe and an ensuite, whilst bedrooms two and three are quite spacious in size. Bedrooms two and three include excellent built-in robes, and the home is serviced by a magnificent main bathroom. The home offers a generous open plan living, dining and kitchen areas, all offering an abundance of natural light. The large modern kitchen is suited for busy families and is also perfect for the master chef. There is plenty of bench and cupboard space and conveniently overlooks the meals and family room so you can cook up a storm whilst you keep an eye on the children. Ducted reverse cycle air conditioning throughout the home will ensure that you have complete climate control in all seasons. As you step outside you are sure to fall in love with the huge under cover decked outdoor entertaining area. This is a great space to relax and entertain this summer or for the children to play and enjoy. Situated close to the beautiful Township of Old Noarlunga and easy access to all the essentials such as shops, schools, transport, parks, sporting facilities, and more, it's easy to see why this home will make the lucky buyer very happy for many years to come! Features you'll love:- 3 generous-sized bedrooms- Undercover outdoor entertaining area- Huge pantry- Stainless steel appliances in the kitchen- Instant gas hot water- Ducted reverse cycle, heating, and cooling- Walking distance to the Seaford train station- Close proximity to local childcare, primary and secondary schools- 5 minutes to stunning beaches- 9 minutes to McLaren Vale, South Australia's famous wine regions

Disclaimer: Every care has been taken to verify the correctness of all details used in this advertisement. However, no warranty or representation is given or made as to the correctness of information supplied and neither the owners nor their agent can accept responsibility for errors or omissions. RLA: 327058