

**810/2 Kingfisher St, Lidcombe, NSW 2141**

**Apartment For Sale**

Wednesday, 17 April 2024



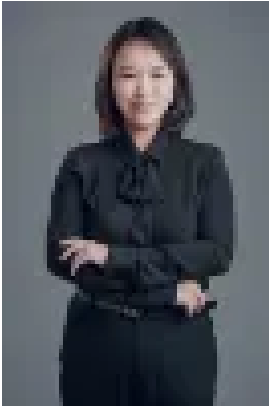
810/2 Kingfisher St, Lidcombe, NSW 2141

**Bedrooms: 1**

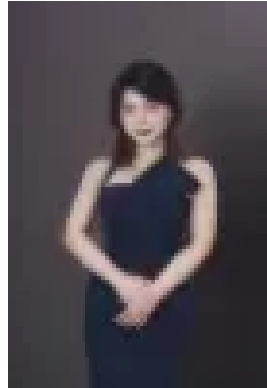
**Bathrooms: 1**

**Parkings: 1**

**Type: Apartment**



Robyn (Lingyun) Bao  
0449078721



Amy Chen  
0432245767

## Great Opportunity for First Home Buyers

Placed in a prime position, enjoying the benefits of being close to Sydney Olympic Park, this designer apartment provides a good entertainment area for outdoor living area and family activities. This striking luxury home showcases high-end finishes. Perfect choice for the first-home buyer, smart investors, and the dynamic urban dweller. In close proximity of a vast selection of local schools, parks and public spaces. Immerse yourself in a community that radiates with an abundance of parklands and trails, sporting facilities, cafes and shops. With more outstanding features than listed here, an inspection is essential! Key features: \* Timber-style engineered flooring flows seamlessly onto unique curvaceous balconies. \* Frameless shower screens and full-height feature walls \* Landscaped and water-featured, the two-story high lobby \* Latest European appliances and integrated cabinetry \* Dedicated media desks and shelving in the living room \* Premium fixtures and fittings extend to the laundry. \* Full-height windows and high ceilings in living areas Don't miss out, contact us for more information and inspection!