

82 Elmstree Road, Kellyville Ridge, NSW 2155

CENTURY 21

House For Rent

Monday, 22 April 2024

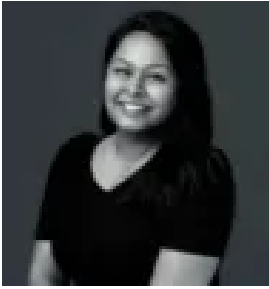
82 Elmstree Road, Kellyville Ridge, NSW 2155

Bedrooms: 4

Bathrooms: 2

Parkings: 2

Type: House



Meenakshi Subramanian
0291910303



Leasing Team
0291910303

\$800 PER WEEK

Lifestyle: immaculately maintained and well presented, this impressive dual-level residence offers a choice of versatile living spaces and seamless indoor/outdoor flow. Ideally set in a quiet family-orientated street this home is close to a wealth of lifestyle amenities. It's a stroll from Stanhope Village Shopping Centre and Kellyville Ridge Public School, with easy access to Rouse Hill Centre and the M7. Features Include:- Modern kitchen with gas cooking, sleek benchtop, & stainless steel appliances- Open plan family/meals area- Formal living & dining areas provide plenty of space for the family- Spacious master bedroom with huge walk-in robe- Two well-equipped bathrooms - Huge low-maintenance rear yard, plenty of room for children to play- Oversized double garage with internal entry & drive-through access- Split system air conditioning Please call the Agent to Arrange Access!!!