

822 Kingsway, Gymea, NSW 2227



Sold House

Wednesday, 20 September 2023

822 Kingsway, Gymea, NSW 2227

Bedrooms: 4

Bathrooms: 1

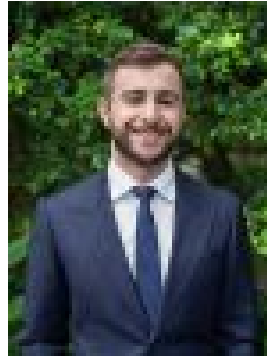
Parkings: 1

Area: 556 m2

Type: House



Dino Salvatore
0295258066



Marcus Salvatore
0433388862

Contact agent

Occupying a 568sqm (approx.) parcel of land & basking in natural sunlight from its north facing aspect, this single level home presents an unmissable opportunity for those looking to renovate or redevelop (STCA). The internal layout features four generous bedrooms, an updated kitchen & a spacious living area that opens out to the front entertaining patio. Plus, out the back you will find an expansive grassed yard with a vegetable patch & garden shed. • Sundrenched living & dining area opening to front alfresco • Kitchen with stone benchtops, dishwasher & double sink • Three spacious bedrooms, two with built-in robes • Main bathroom with separate bath & shower • Additional sunroom/optional fourth bedroom • Separate study with ample storage & attic access • Internal laundry with wash tub & extra powder room • Expansive level grassed yard with manicured garden & shed • Single carport + additional off-street parking for multiple vehicles • Approximate Land Size: 568sqm | 14.33 x 39.7 | Zoned R3 This home is centrally set moments from South Village Kirrawee, Gymea Village, Kirrawee Station, Gymea Station, Gymea TAFE, Kirrawee Public School & within the Gymea Technology High School catchment.