

823 The Entrance Road, Wamberal, NSW 2260

House For Sale

Thursday, 16 May 2024

STONE

823 The Entrance Road, Wamberal, NSW 2260

Bedrooms: 5

Bathrooms: 4

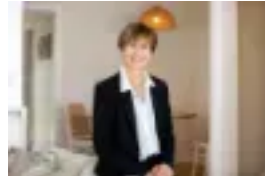
Parkings: 3

Area: 866 m2

Type: House



Christel Renton
0243696000



Helen Hughes
0418220622

Contact Agent

Also known as 7 Antree Place with access from the cul-de-sac this property is a rare offering on 863sqm of land. Located off a quiet cul-de-sac with flexible living, investment and work from home options this property is a unique opportunity. Just minutes to Wamberal and Terrigal Beaches, cafes, restaurants and Erina Fair shopping district this property is one not to miss! Features Include:- Modern, split level, open plan living with high ceilings- Bi-fold doors out to undercover entertaining deck- Gourmet chefs kitchen with double dishwasher & gas cooktop- Wooden flooring throughout, fans and air conditioning- Downstairs offers one bedroom, study and living space - Separate office space or studio adjoining triple lock up garage- 866 sqm of gently sloping land- Dual street access from The Entrance Road and Antree Place - Directly opposite the general store, bakery, post office & more! - Solar panels installed for efficient living - Currently tenanted with potential returns up to \$1,400 per week - Council rates approx \$2,530 pa- Water rates approx \$994 pa