

83 Bungower Road, Mornington, Vic 3931



House For Sale

Thursday, 21 March 2024

83 Bungower Road, Mornington, Vic 3931

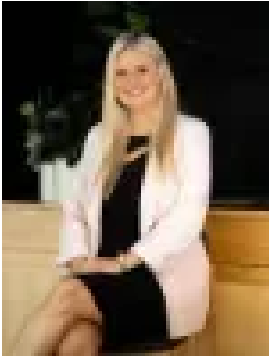
Bedrooms: 3

Bathrooms: 2

Parkings: 2

Area: 640 m2

Type: House



Jade Springer
0359852600

\$770,000 - \$840,000

Located in a prime position, just minutes to the Mornington Homemaker Centre and Padua Secondary College, this warm and inviting three bedroom home has been fully renovated and offers an exceptional opportunity to enter the Mornington Market at an entry level price. Nestled on a generous, minimal maintenance allotment of approximately 640*m2, and featuring light filled interiors, and beautiful gardens, this wonderful property includes a bright kitchen/meals area, a separate lounge, two updated bathrooms, and a spacious undercover entertaining area and deck – perfect for year round alfresco dining. Furthermore, the property also includes a double carport plus additional space for caravan and boat accommodation. Positioned at the end of a beautiful court set well back off Bungower Road, and just a short drive to Mornington main street, plus close to Mornington Racecourse, and a huge variety of local amenities such as farm gates, nurseries, restaurants, medical facilities, recreational activities, schools and shopping – there is a very good reason why Mornington has become the number one destination on the Peninsula. So come along and find out for yourself why the place you love to visit should be the place you call home! Property Features Include:- Beautifully presented three bedroom, two bathroom home.- Generous block size of approximately 640*m2.- Private, tranquil setting in the bowl of the court and located next to the Peninsula Walking Trail.- Spacious undercover outdoor entertaining and deck. - Gas ducted heating.- Split system air-conditioning.- Peaceful gardens and an abundance of mature plant varieties.- Double carport, plus additional space for a caravan, boat and or trailer.- Short walk to local shopping, and a variety of convenient amenities including medical facilities, cafes, and parks. - Easy access to Peninsula Link.- Close to Mornington Secondary College, Padua Secondary College and also within the St Macartan's Primary School zone.*All distances and measurements are approximate only.