

834 Henry Lawson Drive, Picnic Point, NSW 2213

Professionals

Sold House

Monday, 14 August 2023

834 Henry Lawson Drive, Picnic Point, NSW 2213

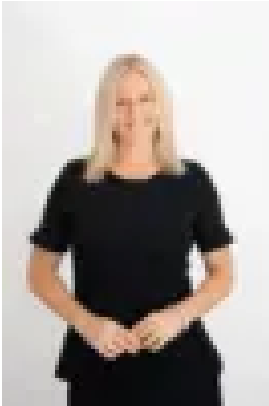
Bedrooms: 6

Bathrooms: 3

Parkings: 4

Area: 2422 m2

Type: House



Belinda Owsnett
0297714555

\$2,900,000

Down a tree-lined driveway there is a hidden hideaway perched high, blending into a picturesque bush setting overlooking the water of the Georges River, where you will feel miles away from Sydney. Without a doubt, this magnificent residence is one of the most unique presented to the market this year. This private and palatial home is designed for every space to capture a glimpse of the beautiful and tranquil nature surroundings, from the water to the enchanting gardens. Not only is this the perfect family home but the potential is endless. Situated on a magnificent 2422 square metre block, with space to build a second residence and potentially subdivide, subject to council approval. Upper Level: * As soon as you open the door to this grand chalet home you are greeted with the stunning bush and river backdrop * Warm timber accents, abundance of windows and glass doors throughout to showcase the unique location * Upstairs lounge room with French doors opening to balcony * Total of six bedrooms, with main plus three more bedrooms on this level * Retreat-style main bedroom with pitched ceilings, ensuite, walk-in-robe and private balcony * Two modern bathrooms are offered on this level, one as ensuite to main Lower Level: * Absolutely an entertainer's dream with multiple living areas leading out to huge undercover area with kitchenette and bar * Two living rooms both featuring sandstone feature wall and open fireplaces * Choice of formal and informal dining spaces * Gourmet kitchen with two island bars and 900m cooktop * Third spacious bathroom plus powder room on this level * Windows and doors frame the enchanting gardens and swimming pool * Double remote garage plus another drive-through garage perfect for a boat * Direct access to picturesque riverfront boardwalk walking track * Park size land totalling approx 2422 square metres, with subdivision potential subject to council approval * Incredible offering for extended families wishing to reside together This home comes once in a lifetime and is truly a must inspect, to absorb and appreciate all that it offers! Details: Belinda Owsnett - 0417 433 313 and Todd Owsnett 0404 429 103