

# 84 Greenhill Road, Greensborough, Vic 3088

## House For Sale

Thursday, 22 February 2024

84 Greenhill Road, Greensborough, Vic 3088

Bedrooms: 4

Bathrooms: 3

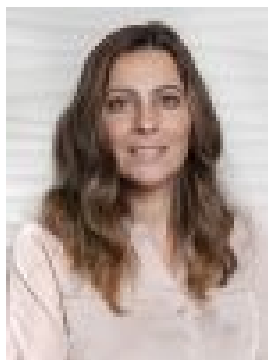
Parkings: 2

Area: 825 m2

Type: House



Rocco Montanaro  
0412379171



Carla Baglieri  
0394312444

**ESR: \$1,125,000 - \$1,230,000**

Superbly situated to enjoy coveted zoning to Greenhills Primary and St Helena College and showcasing family-friendly highlights, including multiple living zones matched by outdoor spaces tailor-made for entertaining, this home on 825m<sup>2</sup> approx offers an enviable environment for the family to flourish. Boasting a layout guaranteed to ensure family harmony, the sprawling ground level offers a rumpus room, a study, enormous family living anchored by a woodfire heater and a family-meals integrating a stunning kitchen. Stone benchtops, soft close cabinetry, a suite of premium Bosch appliances and an enormous butlers pantry with a second oven and sink combine to deliver a sanctuary for a chef and an enticing space for those that love to entertain! Complementing the internal spaces is an expansive paved outdoor entertainment area amidst a captivating garden oasis bathed in the northern sun. Thoughtful zoning has the accommodation options located on the first floor. The main bedroom includes a wall of built-in robes, a walk-in robe, an ensuite and a living room-sized retreat to create the perfect parental indulgence. It shares the level with a second bedroom with ensuite, two further bedrooms and the family bathroom. Extras include a fitted laundry, ducted heating and cooling, a split system unit, and a guest powder room. A clever breezeway behind a roller door provides secure access to an oversized double garage and a spacious powered workshop. There's even a shed for more storage if required! A short walk to the local cafe and takeaway and minutes from Greensborough Station, Main Street and the Plaza, the Ring Road is readily accessible for the trip to town. **\*\*\*PHOTO ID REQUIRED AT OPEN FOR INSPECTIONS\*\*\***