

84A Mott Street, Gaythorne, Qld 4051

Sold Residential Land

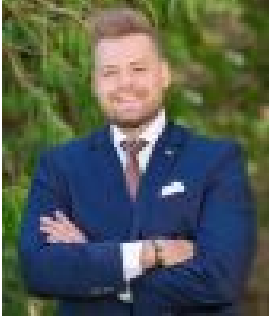
Tuesday, 9 April 2024



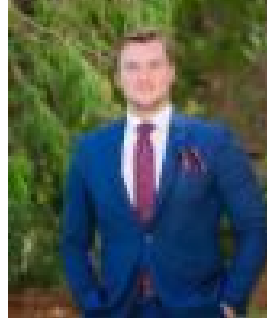
84A Mott Street, Gaythorne, Qld 4051

Area: 419 m2

Type: Residential Land



Gerard Sherlock
0401553182



Flynn Schamburg
0733664033

\$780,000

The Last of its Kind: Discover a rare gem in the heart of Brisbane's character-rich neighbourhood. This is your chance to own the last subdivided vacant land in one of the city's most exclusive areas. Unveiling a prime, high-end land opportunity in a sought-after inner Brisbane suburb, perfect for families and couples looking to create their dream home.

Location Highlights: This is one of Brisbane's best-kept secrets, known to locals who appreciate its exclusivity and charm. It's more than just a location; it's a hidden diamond, waiting to be uncovered.

An Exclusive Oasis: Set in an exclusive family-friendly neighbourhood, this vacant land offers the perfect canvas for your dream home. This is the last available subdivision and the best block in this low-density residential area, akin to the grand character streets in Alderley, Ashgrove, and Gaythorne.

Property Features:

- Situated on the highest point of the street, you'll enjoy stunning city skyline views from the second story.
- The best vacant lots in this part of Brisbane await you, with Lot 1 offering a spacious 419m² of land.
- Low-Density Residential zoning ensures you won't be overshadowed by units and townhouses.
- The site is perfectly flat, making it the most flexible for designing your dream home and the most cost-effective and hassle-free option for building.
- With cool valley breezes all year long and excellent drainage, this site offers an ideal canvas for your dream home.

Unlimited Design Possibilities:

- Embrace your creativity and design the perfect two-story, 5-bedroom home with high ceilings, three bathrooms, media room, and more.
- Your imagination is the only limit - create a home that suits your unique lifestyle.
- Surround yourself with early-century Queenslanders and modern traditional homes in a family-friendly community.
- Enjoy your own "backyard" next to Kedron Brook, perfect for outdoor activities and leisurely walks.

Convenience at Your Doorstep:

- With little through traffic, this peaceful location offers the tranquillity of a cul-de-sac.
- Ample street parking along an impressive wide, tree-lined street.
- Gaythorne railway station is just a 9-minute walk or 2-minute drive away.
- Top schools such as Hillbrook Anglican School, Mt Maria College, and Marist College Ashgrove are nearby.
- Childcare centres are within easy reach.
- Multiple shopping centres, including Brookside, Stafford City, and Everton Park, offer dining, services, and retail therapy.
- Numerous cafes are perfect for your morning coffee fix or a leisurely afternoon spent in good company.

This is a rare opportunity to build your dream home in an exclusive Brisbane neighbourhood. Don't miss out on the chance to secure this prime, high-end land. Contact us today to make your dreams a reality!