

86 Gaynesford Street, Mount Gravatt, Qld 4122



House For Sale

Wednesday, 3 April 2024

86 Gaynesford Street, Mount Gravatt, Qld 4122

Bedrooms: 5

Bathrooms: 1

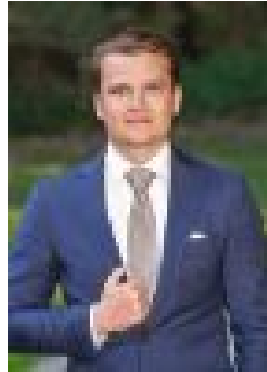
Parkings: 1

Area: 625 m2

Type: House



Tom Agmon
0733493370



Matt Campbell
0733493370

FIRST TIME TO THE MARKET - WILL BE SOLD

ON THE MARKET TO SELL - THIS GREAT PROPERTY IN EVER POPULAR MOUNT GRAVATT IS YOUR NEXT HOME. WITH ONLY ONE OWNER THIS FAMILY HOME HAS BEEN METICULOUSLY CARED FOR IN A FANTASTIC LOCATION. BEING OFFERED TO THE MARKET FOR THE FIRST TIME, DON'T MISS A GREAT OPPORTUNITY THIS HOME WILL BE SELLING ON OR BEFORE AUCTION THE 23RD OF APRIL* Auction via In-Room and Online - 23/04/2024 from 6:00pm, if not sold prior. Auction Location - Mansfield State High School on cnr Broadwater & Ham Roads, Mansfield Registrations start from 5:30pm. (Phone & Online Registrations must be completed by 12:00pm on Auction Day) Situated in one of 4122's best pockets, this beautiful family home has only had one owner. Occupying a 625m² north facing allotment this very generous family home is a renovator's dream! Entering the home you are greeted by the large living and dining rooms, that flow beautifully on to the generously sized back patio. The large kitchen is the hub of the home connecting the multiple living spaces. The home boasts a stunning sunlit sitting area surrounded by the lush gardens and lawn, the perfect space to relax. The living quarters consist of 5 generously sized bedrooms with built-in robes and a large main bathroom with separate toilet. The floorplan of the home has been intelligently designed blending indoor and outdoor living in line with newer home designs. The lower level expands the property well with two very large living spaces or potentially a sixth bedroom for the larger families. The expansive home is finished with a separate laundry and single lock up garage with tonnes of storage space. The many features of this property include:

- Mount Gravatt State Primary & High School Catchments
- 625m² block
- 5 bedrooms with built in wardrobes
- Multiple Living Spaces
- Two large rumpus/multipurpose rooms
- Large living and dining spaces
- Substantial Original Kitchen
- Recent internal Repaint
- Upstairs main bathroom with separate toilet
- Lock up garage
- Undercover entertainers' patio
- Well maintained back yard and gardens
- Walking distance to Kith & Chow Cafe
- 1km to Griffith University Campus
- 400m to Mount Gravatt Mountain Nature Reserve
- 5km to Garden City Shopping Centre
- 6km to Market Square
- 550m to Mount Gravatt State School
- 900m to Mount Gravatt State High School
- 10km to CBD

* subject to reserve price ^ approximate distance For all your home loan needs please get in touch with Christine at Loan Market! p: 0401 175 490 e: christine.junidar@loanmarket.com.au w: <http://www.loanmarket.com.au/christine-junidar> All information contained here is gathered from sources we consider to be reliable, however we can not guarantee or give any warranty about the information provided and interested parties must solely rely on their own research and enquiry.