

86 Grandvue Boulevard, Pakenham, VIC, 3810

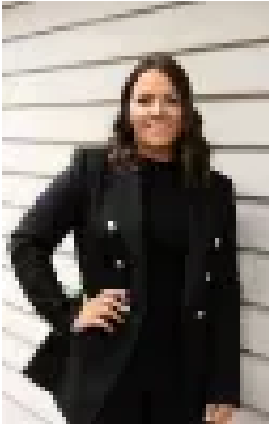


Sold Land

Thursday, 27 April 2023

86 Grandvue Boulevard, Pakenham, VIC, 3810

Type: Land



Tahnee Morgan
0400573483



Terri Fellows
0410029953

A Rare opportunity awaits!

This sensational parcel of land measures at approximately 576m² and has a decent depth of over 30m on both boundaries, providing the lucky purchaser with the opportunity to take advantage of a usable, oversized backyard with plenty of room for the kids and pets to run amuck on!

Surrounded by many high spec quality built homes, it will make your decision to build here an easy decision. Fairhaven homes have already started the process of creating a design to suit the block and the engineering is also available to view.

Grandvue Estate is located within easy reach of all life's necessities. There's a wide range of primary, secondary schools, colleges and day-cares at your doorstep as well as Arena Shopping Centre, Toomuc recreation reserve, parks, walking tracks, public transport, restaurants, doctors, Woolworths, M1 freeway, Princes Highway and so much more.

Please contact your Local Property Experts Terri Fellows 0400 573 483 or Tahnee Morgan 0410 029 953 today for further information, as this amazing opportunity will not last long.

Property Code: 271