

87/44 Macquarie Street, Barton, ACT 2600



Apartment For Rent

Tuesday, 7 May 2024

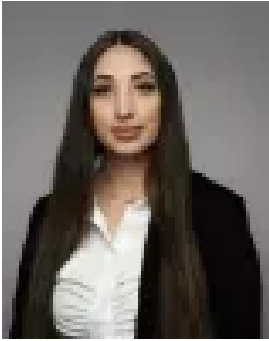
87/44 Macquarie Street, Barton, ACT 2600

Bedrooms: 1

Bathrooms: 1

Parkings: 1

Type: Apartment



Nimra Naz

0262952433

\$560 per week

One bedroom spacious modern apartment located on level 6 in Governor Place Barton, including stylish interior aspects, kitchen with ample storage, quality fittings and appliances. An elegant fully tiled bathroom with European laundry. A generous master bedroom and living area open onto a very large entertainment balcony. Features Include: Ducted reverse cycle air conditioning Galley kitchen with stainless steel appliances and ample storage Spacious balcony with open outlook, with views ideal location to Parliament and Foreign Affairs buildings Spacious main bedroom with sliding doors opening to balcony, large built in wardrobes Luxury bathroom Fantastic storage Secure basement car park and storage cage Secure lift and lobby access This apartment is ideally located in Canberra's inner south. Governor Place has a precinct which include retails stores, restaurants and a mini supermarket. Convenient for those working in Canberra's Parliamentary Triangle Government Offices during the week and who enjoy a bike ride or walk by the lake and Kingston Foreshore on the weekend. Bus services also available. Available: NOW! Tenants must seek Landlord's consent for a pet Energy efficiency rating is unknown This property complies with the minimum ceiling insulation requirement. WISH TO INSPECT? 1. Click on the "BOOK INSPECTION" button 2. Register to join an existing inspection 3. If no time offered, please register so we can contact you once a time is arranged 4. If you do not register, we cannot notify you of any time changes, cancellations or further inspection times. *Please note all care has been taken in providing the marketing information, Blackshaw Manuka will not be held liable for any errors in typing or information and you should rely on your own investigation for accuracy.