

**87 Douglas Drive, Mawson Lakes, SA 5095**



**Sold House**

Saturday, 30 September 2023

87 Douglas Drive, Mawson Lakes, SA 5095

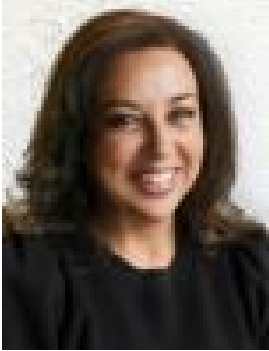
**Bedrooms: 4**

**Bathrooms: 2**

**Parkings: 2**

**Area: 313 m2**

**Type: House**



Julianne Price  
0408771797

**Range: \$825,000 - \$965,000**

Discover this contemporary, sunlit, and effortlessly maintained single-level home, designed with families, investors, and first-time buyers in mind. Nestled in the heart of Mawson Lakes, your new family residence enjoys proximity to lush parklands, essential amenities, and picturesque walking trails right at your doorstep. Key Features: \* Four Bedrooms: Including two with built-in wardrobes. \* Master Suite: The master bedroom with walk-in robe and convenient ensuite access. \* Inviting Living Spaces: Embrace the open-plan living experience, with the kitchen seamlessly flowing into the family and meals area, extending effortlessly to the alfresco retreat, with unobstructed view to the reserve. \* Modern Kitchen: Equipped with stainless steel appliances, a brand-new European oven, gas cooktop, range hood, dishwasher, and stylish tiled splashback. \* Lounge: Find relaxation and tranquility in the separate lounge room, perfect for intimate gatherings. \* Outdoor Delight: Enjoy the tiled alfresco area with captivating parkland views, perfect for outdoor entertaining and leisure. \* Year-Round Comfort: Benefit from zoned ducted reverse cycle air conditioning, ensuring comfort in all seasons. \* Spacious Interiors: Revel in the 2.7-meter high ceilings that provide an airy and spacious ambiance. \* Security: Rest easy with a comprehensive security alarm system in place. \* Convenient Parking: A double garage with internal access adds convenience to your daily life. \* Solar Panel Savings: Harness the power of a 5kW solar panel system, helping you save on energy bills and reduce your carbon footprint. This immaculate family home promises a modern and convenient lifestyle, perfectly located in Mawson Lakes. It's time to elevate your living experience—welcome home to a brighter, more efficient future. Property Details: Council | SalisburyLand | 313sqm(Approx.) House | 187.19sqm(Approx.) Built | 2011 Council Rates | \$1,865.50 pa Water | \$234.70 pq ESL | \$134.65 pq