

87 Fiddens Wharf Road, Killara, NSW 2071



Sold House

Wednesday, 28 February 2024

87 Fiddens Wharf Road, Killara, NSW 2071

Bedrooms: 4

Bathrooms: 1

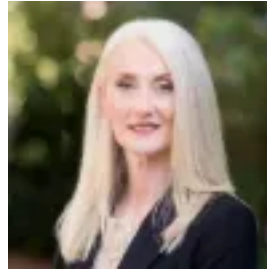
Parkings: 3

Area: 835 m2

Type: House



Scott Phillips
0272270030



Rosanna Morley
0294499066

\$3,250,000

Cherished and adored, this immaculately maintained single level home has been held in the one family since they built it in 1952. Positioned on an exceptional 835sqm block with a northerly to rear aspect, it presents a fantastic opportunity for its new buyer as a great start to family life or site for the next project (STCA). The home is charming, boasting a predominately full brick build, high ceilings and an elegant formal lounge and dining room. Casual living and dining spaces adjoin the very neat and tidy kitchen and open at the rear to the substantial level lawns and carefully tended gardens. The home has been so well cared for you could move straight in whilst planning its future renovations or extension (STCA). It has no conservation restraints in a sensational location, short stroll to the Killara Golf Club greens, bus services, local shops and Beaumont Road Public School and in the Killara High catchment. Accommodation Features: * Classic mostly full brick home, high ceilings, excellent light * Elegant formal lounge with a fireplace, formal dining, a/c * Casual living and dining, tidy central gas kitchen * Three bedrooms rest in a private wing all with built-in robes * Neat and tidy main bathroom with a bathtub and separate toilet * Separate 4th bedroom or study, laundry with a powder room External Features: * Level lawns and gardens, covered front porch * Northerly aspect to rear * Garden terrace, easy access double carport * Large single lock up garage with storage/workshop * Rainwater tank Location Benefits: * 190m to the 565 bus services to Lindfield, Roseville, Chatswood and Macquarie Uni stations * 170m stroll to the Moore Avenue shops and cafes * 210m to Lindfield Montessori Preschool * 220m to Kids Academy Childcare * 270m to Early Learning Papilio Childcare * 450m to Beaumont Road Public School * 650m to Queen Elizabeth Reserve * Killara High School catchment, 270m to local school bus * Close to Roseville College, Ravenswood and Pymble Ladies College * Easy access to, Macquarie Centre & Private Hospital, Chatswood CBD, M2, M7 motorways Auction Thursday 21 March, 5:30pm In rooms - 2 Turrumurra Avenue, Turrumurra Contact 📞 Scott Phillips 0402 272 575 Rosanna Morley 0413 053 322 Disclaimer: All information contained here is gathered from sources we believe reliable. We have no reason to doubt its accuracy, however we cannot guarantee it.