

87 Great Western Highway, Blackheath, NSW 2785



House For Sale

Thursday, 14 December 2023

87 Great Western Highway, Blackheath, NSW 2785

Bedrooms: 4

Bathrooms: 2

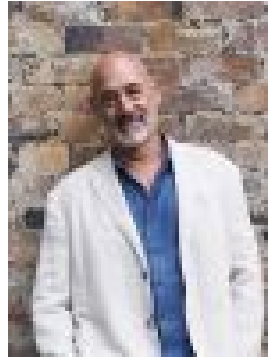
Parkings: 1

Area: 845 m2

Type: House



Adele Colman
0414876211



Lewis Thyer
0430043806

\$760,000 - \$795,000

Tree Haven is a place of surprises, disarmingly modest from the street this home presents as a classic 1950's residence with the iconic step-up front patio to the front door and the signature brick chimney protruding from the front facade. One could be forgiven for expecting the standard rectangle with two bedrooms and a modest lounge, but not so - how does four bedrooms, two bathrooms and three living areas sound! Add to this the large rear deck that looks over the established shady rear gardens and you have a home that is very spacious with plenty of room for the family. Step into the entry hallway and to the left is the formal lounge room that has the previously mentioned large brick open fireplace that is flanked each side by large wooden windows. Move further along to find the kitchen. The kitchen is roomy, with gas cooking and a sweet servery that opens to the rear family room and looks across the gardens. Set to one side of this area is a dining nook that then flows to the family room with a slow combustion wood heater, a terrific place to cosy up to the fire on a chilly winters night. Further on from this space is a very generous north facing room that could be a massive formal dining area or a hobby room - you decide, in this house there are options! The main bedroom with ensuite is tucked down the back of the house which is terrific as you are away from the rest of the tribe - a parent's retreat if you like. There is so much to like here, a roomy older style house, multiple living spaces, a large 845m² established garden block, four bedrooms and two bathrooms, ready to move in or you could renovate to take it to a whole new level..•📍Large 845M² Established Garden Block•📍Town Gas•📍Terrific as it is or renovate to reap the rewards•📍Timber Floors Throughout•📍1950's features like decorative cornices