

87 Johnston Crescent, Lane Cove, NSW 2066

Raine&Horne.

House For Sale

Thursday, 29 February 2024

87 Johnston Crescent, Lane Cove, NSW 2066

Bedrooms: 5

Bathrooms: 3

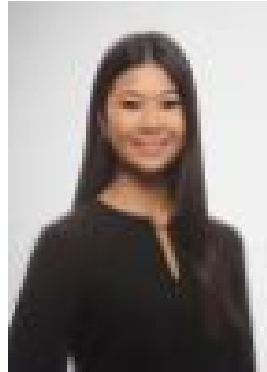
Parkings: 2

Area: 1227 m2

Type: House



Rebecca Mitchell
0283187888



Simone DateChong
0283187888

Auction - Contact Agent

Retreat to this enchanting family oasis where unparalleled seclusion meets resort-style living. Nestled on a sprawling 1,227sqm parcel adjoining Stringybark Creek, this expansive residence basks on a breathtaking north-to-rear block, serenaded only by the chorus of birdsong. Generously proportioned and expertly designed to embrace its surroundings, unwind in the poolside cabana, indulge in the 17m heated lap pool and host large-scale gatherings on the impressive wraparound deck, all while the children frolic on the level lawns. The ultimate fusion of serenity and lifestyle convenience, from here you're well placed for bus services and the local vibrant village precinct with its wonderful mix of cafes, dining options and boutique shops. - Formal lounge/dining with drinks bar flowing seamlessly to the alfresco spaces- Centrepiece family living wrapped by walls of glass and lush greenery- Gourmet entertainer's kitchen equipped with both gas and electric cooking- Large walk-in pantry, breakfast island, Miele double ovens and dishwasher- North-facing master suite, stunning views, walk-in robe, electric blinds and enormous ensuite- Guest/in-law accommodation with its own balcony and private access- Large multipurpose room ideal as a rumpus, pool/games or media room- Fully tiled mosaic 17m heated lap pool with new travertine paved surrounds- Poolside cabana and expansive bush-view deck for large-scale entertaining- Child-friendly level lawns, north-facing native gardens and direct reserve access- Dedicated home office, fitted wardrobes and blackbutt timber floors throughout- Ducted reverse cycle air conditioning and ducted vacuum system- Three bathrooms, ensuite with corner bath, shower and his/her vanity- Internal access to the automatic double garage with floor-to-ceiling storage- Footsteps to buses and rapid access for City, North Sydney and Macquarie Park commuters- Zoned for Mowbray Public School and only moments to Lane Cove Village