

87 Shakespeare Parade, Strathpine, Qld 4500



Sold House

Tuesday, 19 March 2024

87 Shakespeare Parade, Strathpine, Qld 4500

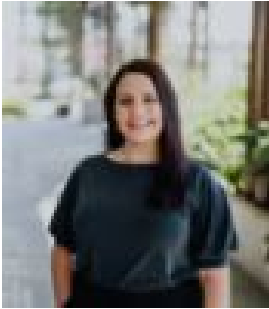
Bedrooms: 4

Bathrooms: 1

Parkings: 2

Area: 640 m2

Type: House



Cara Schwartz

0738821000

\$750,000

Nestled within serene native surrounds, this property offers the perfect blend of tranquility and entertainment. Step onto the beautiful wraparound deck and immerse yourself in the ambient surrounds, or indulge your guests with entertainment options, second to none. Perched on 640m², the family home is conveniently located to all amenities and perfect for families and astute investors. Upstairs: • Ducted air-conditioning throughout. • Beautiful wraparound deck overlooking the native surroundings, peaceful and quiet, recently resealed and painted. • Large, open plan living and dining area, complete with stunning timber polished floors and direct access to the huge deck. • Family kitchen, complete with plenty of bench and cupboard space and gas cooktop. • Stunning VJ paneled walls align the hallway with stylish lighting for an extra touch of elegance. • Air conditioned, master bedroom with polished timber floors, freestanding wardrobes and window furnishings. • Three additional large bedrooms, two complete with built-in wardrobes and ceiling fans. • Neutral colours and natural light adorn the family bathroom, complete with bath, shower and modern vanity with separate toilet for convenience. Downstairs • Large open plan utility area, used as a living and entertainment space complete with convenient toilet for guests and entertaining. Complete with air conditioning and vinyl flooring and direct access to the outdoor entertainment area. • Second family kitchen, the area offers a huge island bench, perfect for entertaining and complimented by a gas cooktop, oven and dishwasher. • Large outdoor, undercover entertainment area offering authentic pizza oven and second stoned seating area. Additional Features: • Side Access with fully fenced backyard. • Energy efficient solar • Security screens throughout. • Landscaped gardens & garden shed • Building and pest inspection report available to interested purchasers. • Smoke alarm compliant. • Three water tanks Approximate Costings: • \$430 - Council Rates per quarter • \$650 - \$700 estimated rental return per week Approximate Distances: • 200m - Nearest bus stop • 1.2km - Strathpine State School • 1.4km - Pine Rivers State School • 1.9km - Bray Park Train Station • 2.1km - Strathpine Shopping Centre and City Centre • 4.3km - University of Sunshine Coast • 23km - Brisbane City Centre • 24km - International and Domestic Airport Additional Suburb Information: Strathpine is part of the Moreton Bay Region and is home to the Pine Rivers District offices as well as many Businesses. The area is home to Strathpine Centre, a medium-sized urban shopping centre, 2 train stations, Pine Rivers Park (a large park often used for public entertainment) and plenty of educational facilities. The suburb is popular among young professionals, mainly due to its accessibility to employment hubs around the area and easy commuting. For more information, or to arrange a private inspection Contact Cara Schwartz on 0490 518 359.