

88 Garrett Street, Murarrie, Qld 4172

House For Sale

Tuesday, 23 April 2024

88 Garrett Street, Murarrie, Qld 4172

Bedrooms: 3

Bathrooms: 1

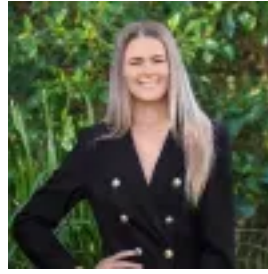
Parkings: 2

Area: 523 m2

Type: House



Deanne Hansom
0739061366



Ashleigh Hansom
0739061366

Offers Closing 7th May

Sitting proudly on Garrett Street, this family home, built in the 1990s, encompasses 523sqm and invites you to move in and customize it with your own distinctive style. Known for its elevation and outlook, this residence enjoys natural light and breezes with a peaceful outlook whilst only being 10km* from the CBD. This home must be inspected so that you can appreciate what is on offer! The property will cater for both professionals and/or families with room to grow! Property Features: Three bedrooms, all with built-ins and ceiling fans Recently refreshed: flooring, paint, kitchen benchtop + appliances, lighting & ceiling fans Two separate living zones flowing from one another Updated kitchen with open plan living creating the hub of the household Main bathroom with two way entry from living and master bedroom – shower + bath Front balcony with views & rear balcony Separate laundry with side access Double lock up garage with ample storage Sub floor storage for that extra storage space 523sqm block fenced Rates & Return: Council Rates \$618.70 per quarter *Estimated Rental Return: \$680 per week - \$710 per week *Location: 8-9km* to Brisbane CBD 12* minutes to Brisbane Airport 1* minute to Gateway Motorway to travel north or south 12* minutes to Westfield Carindale 6* minutes to popular Oxford Street, Bulimba 2-3* minute drive to Cannon Hill Shopping Centre 2-3* minute walk to Murarrie Train Station 2* minute walk to local Bus Stops 3* minute walk to local cafe; - Sonny's Local schools include: Murarrie S/S, Balmoral State High, Cannon Hill S/S, St Oliver Plunkett, CHAC Local shops include: Woolworths, Coles, TK-Max, Bunnings, Rebel Sport, K-Mart and more Contact Team Hansom Deanne Hansom | 0403 066 191 Ashleigh Hansom | 0448 742 538* = Approximate