

88 John Street, Kilmore, Vic 3764

CHWYLA

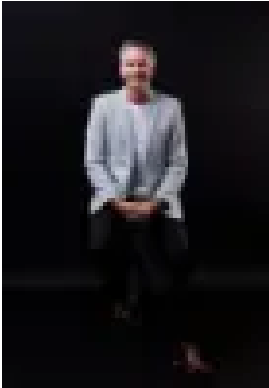
Sold Residential Land

Friday, 3 November 2023

88 John Street, Kilmore, Vic 3764

Area: 942 m2

Type: Residential Land



Troy Hodge
0386009995

\$315,000

Make more of : ? 942m2 block ? Vacant land ? Views of Mount William ? Build your dream home ? 600m to Kilmore Village ? 600m to Coles / Aldi ? 650m to McDonalds ? 800m to MacNamara's Irish Pub ? 1.8km to Trackside ? 1.9km to Assumption College ? 1.9km to Kilmore Footy Club ? 4km to Kilmore East train station ? The initial appeal – 942m2 of vacant land, walking distance from Coles, Aldi, Woolies, the Irish Pub, coffee, the bakery...[ie. custard tarts, pastries, etc]. Family strolls down to the shops for a late arvo snack will be your new favourite thing. The main attraction – Having a blank canvas to build the long-awaited dream home. Set up high on the hill, you'll have cracker views of Mount William and enough room to drop in a pool, shedding and maybe even a play area for the kids. It's John Street, but 88 has your name all over it. Your journey here starts right now.