

**8811/128 Charlotte Street, Brisbane City, Qld 4000**



## **Apartment For Rent**

Friday, 10 May 2024

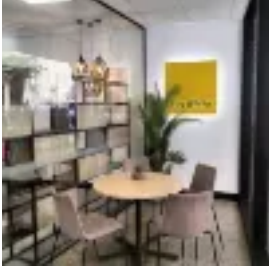
8811/128 Charlotte Street, Brisbane City, Qld 4000

**Bedrooms: 1**

**Bathrooms: 1**

**Area: 66 m2**

**Type: Apartment**



Ray White Inner Brisbane Apt Leasing  
0736384660

## **\$700 Per Week**

Conveniently located in the heart of Brisbane CBD and in close proximity of the exciting Queen's Wharf Precinct and the New Albert Street Station, this apartment offers so much which needs to be inspected to be appreciated. This easterly facing apartment offers spacious living areas, a versatile alfresco balcony and study nook. Features:- 1 large bedroom with mirrored built-in wardrobe - 1 modern bathroom- 1 spacious study nook with a second mirrored wardrobe- Separate laundry room- Private alfresco balcony can be fully enclosed or opened up to create a unique living space- Open plan living area features bi-fold doors which open out to the alfresco balcony- Good size kitchen boasts stainless steel appliances with gas cooktop and stone benches- Fully ducted heating & cooling air-conditioning throughout- Large open plan layout, 66sqm in total with City views- Fully Furnished- Please note there is no car space with this apartment. Building Features include:- Outdoor pool and sun deck- Heated 25m indoor lap pool- Fully equipped gymnasium- Sauna- BBQ and entertaining area- Ample visitor car parks Charlotte Towers is located in the perfect central CBD location and features resort style building facilities including two pools, spa, sauna, gym and BBQ area. To register your interest or book an existing inspection time please click the "Book an Inspection Time" button above and follow the prompts. If the inspection times listed are not suitable please click the 'times not suitable' button so that we may contact you to arrange an alternative inspection time. PLEASE NOTE if you do not register we cannot notify you of any time changes or cancellations Applications are subject to inspection however may be submitted prior to viewing. Please ensure applications are complete when submitting to ensure no delays in processing for you. While care has been taken in the preparation of these particulars; no responsibility is accepted for the accuracy of the whole or any part and interested persons are advised to make their own enquiries and satisfy themselves in all respects.