

# 88A Brougham Street, Potts Point, NSW 2011

**BresicWhitney**

## Sold Terrace

Monday, 11 September 2023

88A Brougham Street, Potts Point, NSW 2011

**Bedrooms: 4**

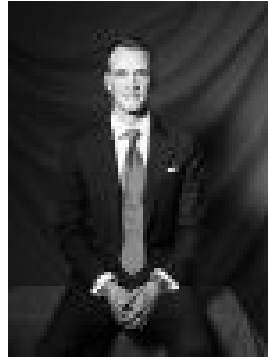
**Bathrooms: 3**

**Parkings: 1**

**Type: Terrace**



Christopher Breedon  
0455372089



Josh Fleming  
0413175060

## Contact agent

An end-of-row terrace with huge opportunity for your own vision, this home comes with an impressive width throughout, set over three levels. With incredible views of the city skyline and harbour, it's a landmark investment, or a chance for you to reimagine with new touches, creating a statement home in this iconic pocket of Inner Sydney. Highlights\* Between Vic. St & Woolloomooloo dining\* One of the area's original iconic addresses\* Impressive views of city skyline & harbour\* Gated entrance, freestanding to one side\* Street presence, preserved Victorian front\* Polished timber floors, generous interiors\* Large courtyard w/ secure car parking\* Stroll to Harbour, Botanic Gardens, CBD\* Kings Cross trains & the city at your door\* Opp. to create CBD-fringe statement home