

89 Jersey Road, Woollahra, NSW 2025



Terrace For Sale

Friday, 3 May 2024

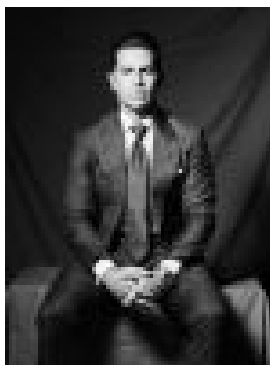
89 Jersey Road, Woollahra, NSW 2025

Bedrooms: 3

Bathrooms: 3

Parkings: 1

Type: Terrace



Maclay Longhurst
0283556783

Buyers guide \$7,500,000

A home of distinction superbly rebuilt with bespoke interiors by Vogue Living Top 50 designer Phoebe Nichol, this magnificent approx. 5.1m wide terrace is on a dual-frontage block with a private alfresco courtyard by Parterre Garden, rear lane access and DA approved parking. Elegant cream tones and rich architectural details define the luxuriously curated interiors with spacious living areas, oversized bedrooms, marble bathrooms and a Carrara island kitchen flowing to the garden. A sunlit sanctuary in a blue-chip position just 250m to Queen St village. * Dual-frontage block with DA approved parking* Double living rooms, Jetmaster gas fireplaces* 3 king-size bedrooms, decorative cornices * 3.5 marble bathrooms, bathrooms with underfloor heating* Dining area adjacent to the designer kitchen * Custom kitchen with Carrara breakfast bench* Ilve stove, integrated French door fridge/freezer* Integrated Eurocave wine fridge in kitchen* Bespoke finishes/fittings, Perrin & Rowe tapware* Ducted air-con, European oak flooring, 3.1m high ceilings* Bi fold doors open to courtyard with electric awning* Featured Vogue Living magazine May/June 2024