

**89 Suspension Street, Ardeer, Vic 3022**

**House For Sale**

Tuesday, 9 April 2024

**MAIN|ROAD**  
REAL ESTATE

**89 Suspension Street, Ardeer, Vic 3022**

**Bedrooms: 3**

**Bathrooms: 1**

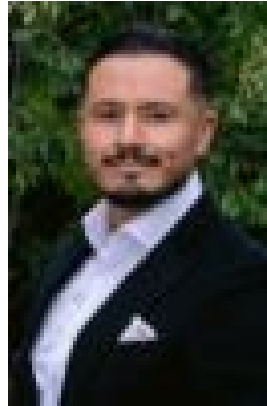
**Parkings: 4**

**Area: 603 m2**

**Type: House**



Ray Mirza  
0409557788



Anthony Orellana  
0468629408

## **\$650,000 - \$699,000**

Ideally located within a quiet tree-lined street, Main Road Real Estate proudly presents this beautifully renovated 3-bedroom family home situated on an expansive allotment of 603sqm (approx.), enjoying a peaceful lifestyle melded with boundless convenience. Beginning with a low-maintenance front yard, the sprawling path beckons you inside to a traditional entry, providing seamless connectivity throughout the home. With zoned living spaces, the sundrenched lounge creates elevated everyday living and relaxing nights in. Paying homage to the home's original character, the ceiling rose and crown molding have been beautifully preserved, adding charm to the contemporary space. The combined kitchen/meals area sets the pace for exploration of culinary masterpieces, from simple right up to the most extravagant. Equipped with a spacious corner kitchen, boasting quality stainless steel appliances, including gas cooktop, under-bench oven and dishwasher, paired with a deep double sink and an abundance of storage throughout. Heading outside, the undercover entertaining area awaits, perfect for summer barbecues. Surrounded by a lush, flat expanse of lawn, the backyard provides plenty of space to pets and kids to run and play. Comprising a total of three sleep sanctuaries, all set atop plush carpet, each space is superbly fitted with a built-in robe for maximum storage. Occupants and guests alike will enjoy rest and rejuvenation in a comfortable sunlit space in the day, along with peace and serenity at night. Centrally located, the sparkling family bathroom offers a choice of a relaxing bathtub, making kids' bathtimes a breeze, or shower in the combo, long vanity with storage, and a sleek toilet, while the combined laundry/powder room provides an easy alternative, running just off the kitchen/meals area. Whether you're getting ready for the day or unwinding at the end of the week, the bathroom strikes a delicate balance between practical and elegant. Other features include a separate storage shed and reverse-cycle split-system heating and cooling for year-round comfort. Positioned in an ultra-convenient location, enjoy living within walking distance to Ardeer Community Park, Ardeer Railway Station for an easy trip into the city, a range of educational institutions including Ardeer Primary School, Mother of God Primary School, Marian College, and St Paul's Primary School, and meandering walking trails along the banks of Kororoit Creek. Located only minutes from the Western Ring Road and Ballarat Road, providing endless connectivity across Melbourne.