

89 Swanston Street, Geelong, Vic 3220



House For Sale

Wednesday, 12 June 2024

89 Swanston Street, Geelong, Vic 3220

Bedrooms: 3

Bathrooms: 1

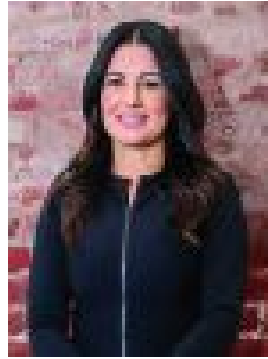
Parkings: 1

Area: 382 m2

Type: House



David Cortous
0416164336



Candice Costoso
0431577870

\$750,000 - \$810,000

Set in tightly held Geelong and nestled amongst some of the region's most prized properties, this charming Victorian blue stone cottage, rich in history was built in 1871 and offers up the perfect opportunity for the astute purchaser who is looking for that inner city lifestyle that only this location offers. The home is set over a generous 382sqm (approx.) of land with rear access to a carport, plenty of yard space and is at the ready for the lucky purchaser just to move the furniture in and enjoy. On entry, you are greeted with many features from the era including, tall ceilings, ornate cornice work and the trademark hall arch that is iconic for these homes. Three large bedrooms are perfect for the young couple, downsizer or small family and is serviced by a large central bathroom complete with bathtub and separate shower. The formal lounge offers up a relaxed space to enjoy with a feature fireplace and the open plan kitchen/meals area has a floor-to-ceiling glass atrium looking onto an enclosed garden. A studio attached to the carport offers further flexibility and could be utilized as a home gym, art studio or home office. Set in beautiful central Geelong and just a short stroll to the CBD, the medical precinct, cafes, restaurants and the prized Geelong waterfront this amazing property will impress the most astute buyer. A true lifestyle property located in a tightly held tree lined street and in a high capital growth location. - Gorgeous period home located on a beautiful tree lined street - Three bedrooms serviced by a central bathroom - Formal lounge and large modern kitchen - Open plan meals/kitchen with glass atrium - Beautiful period features throughout - Heating and cooling - Rear access - Blue chip central location