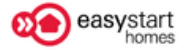


895 Lighthouse Grove, Madora Bay, WA 6210



House For Sale

Tuesday, 9 April 2024

895 Lighthouse Grove, Madora Bay, WA 6210

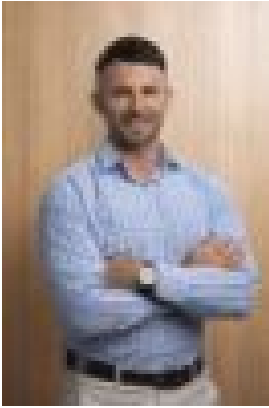
Bedrooms: 4

Bathrooms: 2

Parkings: 2

Area: 375 m2

Type: House



Sean O'Neill
0424606643

\$607,450

The Aspen packs a punch. The spacious master suite (with walk-robe and ensuite) is located at the front of the house away from the action of the open living/dining/kitchen. This space opens onto the alfresco - perfect for entertaining or summer nights cooking a BBQ. All minor bedrooms are all located in a side-wing to keep the little rugrats (and their mess) out of sight. It's a compact design, suited for a 12.5m wide by 25m long block - while still being spacious. *Images depicted on this site are for illustration purposes only. Facades and other images of homes and land estates may include optional upgrades, additional fixtures, finishes and home or estate features that are not included in the base price of the home or land package such as landscaping, feature tiling, decking, furnishing, feature lighting, pools, etc. Land estate pricing and plans are subject to developer guidelines and may vary at any time.