

8E/36 Princess Street, Brighton-Le-Sands, NSW 2216 **CENTURY 21**

Apartment For Sale

Wednesday, 17 April 2024

8E/36 Princess Street, Brighton-Le-Sands, NSW 2216

Bedrooms: 2

Bathrooms: 2

Parkings: 2

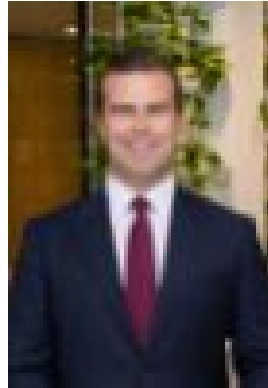
Area: 145 m2

Type: Apartment



Ali Oksuz

0419469459



Kieran Rees

0402364050

Contact Agent | Ali Oksuz

Well-appointed and contemporary, this breathtaking apartment is situated in a tightly held complex and its most sought after north-east aspect. Set in one of the area's most exclusive developments, the apartment embraces panoramic city, district and water views. The retreat showcases voluminous interiors that are filled with ample natural light that transitions seamlessly to an open-plan living and dining space, flowing effortlessly onto the entertainer's balcony. Featuring a new ultramodern kitchen, caesarstone benchtops, BOSCH appliances, Herringbone parquet floors and warm timber tones throughout. This once in a lifetime opportunity is within metres of the water, cafes, restaurants, Coles and a short stroll to local schools and lifestyle requirements. -?North-easterly aspect with water views and City panorama-?Open plan layout, seamless indoor/outdoor flow-?2 large bedrooms with poly built-ins, master with ensuite-?Herringbone timber floors throughout living quarters-?2 opulent bathrooms with complimenting joinery-?3 balconies in total, perfectly designed for entertaining-?Capturing breathtaking views from open plan living/dining -?New house-sized kitchen with BOSCH appliances-?Internal laundry, ample storage, security intercom-?Secure basement parking for 2 vehicles side-by-side-?Apt. size 145m² + 29m² car spaces = total 174m²