

9/1 Boomerang Place, Woolloomooloo, NSW 2011

BresicWhitney

Apartment For Sale

Wednesday, 12 June 2024

9/1 Boomerang Place, Woolloomooloo, NSW 2011

Bedrooms: 2

Bathrooms: 2

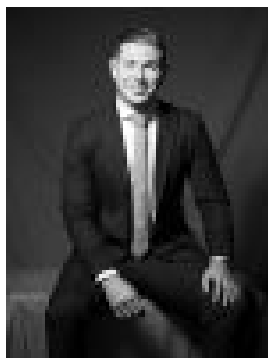
Parkings: 1

Area: 100 m2

Type: Apartment



Melinda Antella
0402429462



Christopher Breedon
0455372089

Guide \$1,375,000

Auction Location: On site An oversized courtyard home with direct garden access, this is one of the more unique designs in this resort-style setting. With gates opening to the sprawling lawns and leafy surrounds, it delivers a rare house-like ambiance alongside an inner-city lifestyle. Free Strata Report at bw.com.au Highlights* Oversized floorplan + valuable parking* Neutral interiors, quality finishes t/out* Stone kitchen, air-cond, wired sound* Quality stainless steel gas appliances* Multiple sliding doors & in/outdoor flow* Full-width terrace, leafy garden aspect* Built-in wardrobes & plenty of storage* Main bathroom w/ spa, internal laundry* King master bedroom w/ private ensuite* Adj. resort surrounds & swimming pool