

9-11 Turnberry Close, St Leonards, Vic 3223



Sold House

Friday, 8 September 2023

9-11 Turnberry Close, St Leonards, Vic 3223

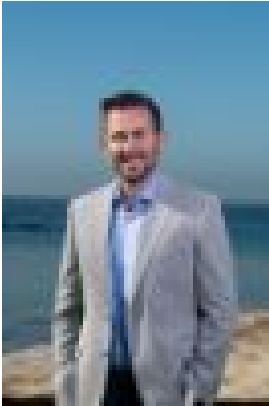
Bedrooms: 3

Bathrooms: 2

Parkings: 4

Area: 642 m2

Type: House



Lachlan Campbell
0352571778

\$955,000

This stylish home, located less than 400m to the white, sandy beaches of Port Phillip Bay, offers a fabulous lifestyle with the convenience of being close to all amenities. The house boasts quality appointments and feature finishes leaving those within the property in awe of the home and location. Situated less than 250m to the cosmopolitan township of St Leonards, with it's many coffee shops, life will be like a holiday moving into your new home and enjoying the best St Leonards has to offer. This steel frame home was architecturally designed for relaxed living with incredible versatility, perfectly positioned amongst local amenities while just moments from the fishing, boating and beaches of Port Phillip Bay. Soaring cathedral ceilings with exposed timber beams feature in the sizeable living room and spacious decked sunroom, each warmed by its own heater while a tidy modern kitchen with meals nook sits just around the corner. The master bedroom adjoins a large walk-in robe and a lovely ensuite with access to the rear decking, while the 2nd bedroom includes a built-in robe and bay windows with views of the lush rear garden. The large 3rd bedroom has upstairs all to itself with a built-in robe and bookshelves, a WC and kitchenette, a bright skylight and a generous balcony deck – perfect for dual living, a teen retreat or extended family. The main floor is serviced by the central bathroom with a toilet, vanity and shower-over-bath, while a separate laundry is available outside with an additional toilet and shower. Externally the home offers a super sized four car garage with high clearance ideal for the storage of caravans and boats, this is truly a rare offering for those looking to downsize or a superb holiday home/holiday rental opportunity in an unbeatable location.