

**9/2 Lamb Street, Moonee Ponds, Vic 3039**



**Sold Townhouse**

Saturday, 13 January 2024

9/2 Lamb Street, Moonee Ponds, Vic 3039

**Bedrooms: 3**

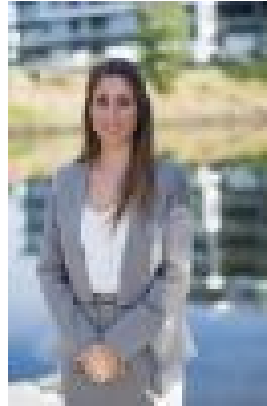
**Bathrooms: 2**

**Parkings: 2**

**Type: Townhouse**



Quentin Hinrichs  
0419387703



Amanda Basilone

**\$1,035,000**

In an enviable location with instant access to the very best of Moonee Ponds, this stunning residence with double garage, delivers an exclusive environment of unmatched opulence and floorplan flexibility, delivering the ideal lifestyle choice. Featuring: • Three generous bedrooms • Ground floor master bedroom with ensuite • Luxurious central bathroom with bath tub, stone-top vanity, floor to ceiling tiles • Impressive 2Pac kitchen with island bench space, AEG appliances • Bright and spacious open plan living leading via double sliding doors to a full width covered terrace • Heating and cooling throughout • Double garage • Rain Water Tank + Solar Hot Water - 6 Star Energy Rating • Double Glazed Windows • Tasmanian Oak Hardwood Timber Floors • Video intercom system Just a few meters to Mt Alexander Road's renowned restaurants, Puckle Street shopping, an abundance of boutique shops, cafes and wine bars, tram lines (routes 59 and 82), it's also close to Queens Park, Moonee Ponds Station and easy access to Citylink.