

9/24 Wattle Road, Hawthorn, Vic 3122



Unit For Sale

Monday, 22 January 2024

9/24 Wattle Road, Hawthorn, Vic 3122

Bedrooms: 2

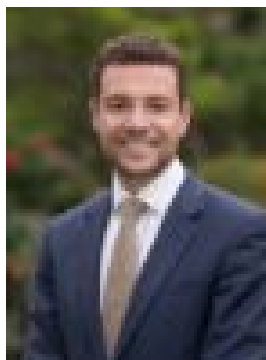
Bathrooms: 1

Parkings: 1

Type: Unit



Chris Hingston
0298105000



James Fitzpatrick
0398105000

\$900,000

A secluded single-level oasis of high-end style that's set to the rear, this stunning residence with a view to the city skyline is world-class and whisper-quiet with an undeniable wow-factor. The definitive contemporary renovation has completely transformed this brilliant villa unit showcasing beautiful designer spaces edged in solid oak floors and Italian lighting. A central hallway launches a streamlined, easy-care layout filled with natural light that leads to 2 double bedrooms (BIRs, electric Velux) beside an ultra-chic bathroom with Italian feature tiling and twin-head shower. The stylish living/dining room with its full-height wall of stacker doors and electric blinds merges seamlessly with a sensational courtyard highlighting irrigated vertical garden and durable high-tech alfresco deck. The hub of this high-quality, low-upkeep home is a luxury Polyform kitchen boasting Miele appliances, including fully integrated fridge/freezer and Caesarstone benchtops ensuring entertaining will never be the same again. Also offers laundry, heating/cooling and covered car space on title at the door. The location is one for an amazing, active lifestyle near all that Hawthorn has to offer and Richmond's shops and restaurants, Yarra River parkland and trails, train station, trams, Monash freeway and excellent schools.