

9/4 Murlong Crescent, Palm Beach, Qld 4221



Sold Unit

Monday, 22 January 2024

9/4 Murlong Crescent, Palm Beach, Qld 4221

Bedrooms: 2

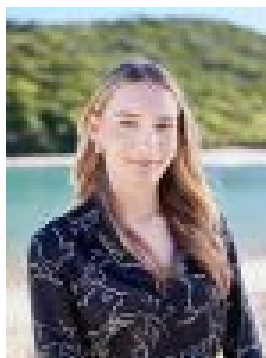
Bathrooms: 2

Parkings: 1

Type: Unit



Will West
0755766616



Sol Brown
0490774636

\$1,092,000

This rare 2-bedroom unit offering is located on the stunning Tallebudgera creek in one of Palm Beach's most sought-after streets. Looking directly out onto the pristine waters, there's something here to suit everyone whether it's stand-up paddle boarding, fishing, swimming, kayaking or boating with the boat ramp close by. Facing north to appreciate beautiful Tallebudgera Creek views, this top floor apartment is spaciouly designed and renovated throughout. Situated in the L'Colonial Court building, a small boutique building of only 9 units. A pleasant walking track hugs the perimeter of Tallebudgera Creek which also incorporates a council shower if you decide to take a dip into the safely allocated swimming area. A short stroll will also lead you to one of the cleanest beaches the Gold Coast has to offer, with Tallebudgera Surf Life Saving Club at your fingertips and public transport not far from your front door.- Renovated top floor apartment with panoramic views over Talle Creek & Burleigh Headland- Generous layout offers a modern open plan living/dining & kitchen area- Infused with warm natural light, lovely North & South cross breezes & on trend decor- Entertaining balcony boasts a superb waterfront outlook- Spacious lounge, dining & kitchen areas with water views- Sleek kitchen with quality appliances & stone island bench- Premium appointments, stylish bathroom, separate laundry- Sizable airy bedrooms with ceiling fans enjoy wonderful hinterland scenery- Southeast facing master bedroom has a walk-through robe & a chic ensuite- Well maintained boutique complex of only 9, secure single car space- Close by to the boat ramp, waterfront park, walk/ride to beach- Walk to cafes in West Burleigh, Koala Park & Tallebudgera beach- 5 minutes to the heart of Burleigh & restaurants, easy north/south M1 access- 20-minute walk to Burleigh Heads via National Park- Close to schools, parks, shopping centres & public transport is close by Often sought but seldom found in this stunning location on the magnificent Estuary, inspection is an absolute must for those who will appreciate the uniqueness of this lifestyle property where you can walk around to patrolled surf beaches without a road to cross.