

9/40 Wattletree Road, Armadale, Vic 3143

Apartment For Rent

Monday, 27 May 2024



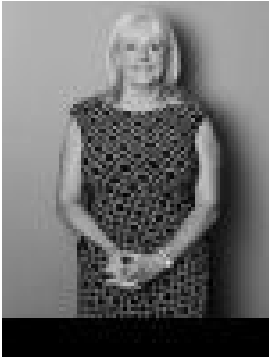
9/40 Wattletree Road, Armadale, Vic 3143

Bedrooms: 2

Bathrooms: 1

Parkings: 2

Type: Apartment



Fran Gill

0438087022

\$695 per week

This stunning top floor apartment, which has been freshly painted throughout, is located in a sought-after boutique block of twelve boasts an enviable location moments from Glenferrie Rd eateries, High St shopping, Malvern Central and trains/trams. Meticulously renovated it features stunning walnut-coloured hardwood floors that flow throughout the principle living space whilst each of the two bedrooms enjoy neutral-toned carpets, large picture windows and built-in robes, serviced by a deluxe bathroom with shower-over-bath and Euro-style laundry facilities. The open-plan living and kitchen zone leads out via a wall of glass sliding doors to a generous decked balcony with leafy vistas and a prized northerly aspect. The kitchen includes top-of-the-range Bosch induction cooktop, oven and dishwasher, stone bench tops and ample storage and an adjacent open dining room and /or office space. Additional features include split-system heating and cooling, secure intercom entry, and basement parking for two cars plus storage cage. Maison conduct private inspections, please call our office to arrange an appointment.