

9/45 Tuckfield Street, Fremantle, WA 6160



Townhouse For Sale

Friday, 31 May 2024

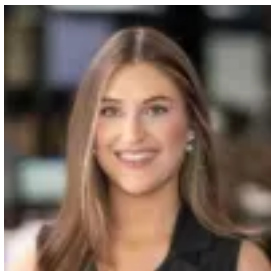
9/45 Tuckfield Street, Fremantle, WA 6160

Bedrooms: 2

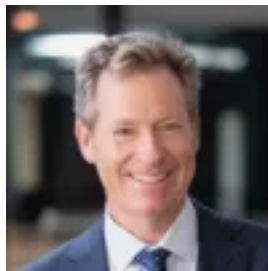
Bathrooms: 1

Parkings: 1

Type: Townhouse



Hannah Tallon
0893855559



Richard Young
0893855559

New to Market

Nestled within the iconic "Tuckfield Terraces" in between East Fremantle's vibrant George Street precinct and the town's inner harbour waters, this impressively-renovated 2 bedroom 1 bathroom terrace townhouse enjoys ocean glimpses from upstairs and encourages a desirable lock-up-and-leave lifestyle for all involved. This charming residence is stylish and modern, yet with all of its original character still very much intact and welcomes you inside via an open-plan lounge and dining area, beyond a splendid gated courtyard entrance. There is even space for a study nook within the comfortable floor plan, whilst the courtyard itself is perfect for sitting and quiet contemplation. The kitchen is impeccably appointed with its tiled splashbacks, sleek white cabinetry, stainless-steel range hood, ceramic cooktop, a quality dishwasher and a water-filter tap, with the adjacent laundry playing host to a linen cupboard, extra storage and a separate toilet. A second rear courtyard can be found off here and is more suited to private outdoor entertaining, with easy gated access to the single car bay. Upstairs, high raked ceilings add character to two large, carpeted bedrooms – the master of which extends out to a lovely terrace balcony – with a Fremantle harbour vista – and has mirrored built-in wardrobes. In between lies another storage cupboard, as well as a light, bright and revamped bathroom, comprising of a shower, vanity and second toilet. Everything you need is only a matter of minutes away, including the heart of Fremantle's fabulous cappuccino and restaurant strip, the Fremantle Arts Centre, John Curtin College of the Arts, other schools, public transport and more. Convenient is an understatement, here!

FEATURES INCLUDE:

- Harbour Views
- Front and rear courtyards
- Low-maintenance timber-look flooring downstairs
- Split-system air-conditioning
- Feature skirting boards
- Security doors and screens
- Gas hot-water system
- Single car bay

Council Rates: \$1,975 (approx) per annum
Water Rates: \$1,195 (approx) per annum
Body Corp: \$550 (approx) per quarter

Disclaimer: The particulars of this listing have been prepared for advertising and marketing purposes only. We have made every effort to ensure the information is reliable and accurate, however, clients must carry out their own independent due diligence to ensure the information provided is correct and meets their expectations.