

9/545 Pacific Highway, St Leonards, NSW 2065



Sold Unit

Thursday, 19 October 2023

9/545 Pacific Highway, St Leonards, NSW 2065

Bedrooms: 2

Bathrooms: 2

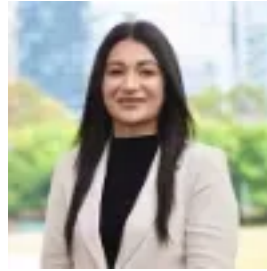
Parkings: 1

Area: 95 m2

Type: Unit



Andy Yeung
0291968788



Nicolina Talarico
0421562652

Contact agent

www.rwayrealtychatswood.com.au This contemporary two bedroom apartment showcases impressive features throughout, stunning views and a prime location surrounded by endless amenities to create the ultimate lifestyle. As you step inside, you'll be greeted by a spacious and well-designed living area, perfect for relaxation and entertaining guests. The interior boasts a modern and stylish design, with beautiful flooring and floor to ceiling windows that allow ample natural light to flood the space. Both bedrooms are generously sized and offer a peaceful retreat. Located in the heart of St Leonards, this property offers easy access to a range of amenities, including cafes, restaurants, and shops. The Pacific Highway location ensures excellent connectivity to the rest of Sydney, with public transportation options just a stone's throw away. - Corner position, plenty of natural light throughout, stunning views - Spacious open plan living & dining areas, large mirrored built in storage - Floor to ceiling windows, large balcony perfect for entertaining - Modern stone topped kitchen with quality appliances & gas cooking - Generously sized bedrooms with BIRs, master with ensuite, modern bathrooms - Internal laundry, air-conditioning, ample storage - Approx. 50m away from the upcoming Crows Nest Metro station - Approx. 5 minutes walk to Crows Nest village, Woolworths, Coles, cafes and shops - Approx. 9 minutes walk to St Leonards station - Steps to Royal North Shore Hospital