

9-A503/21 Canberra Avenue, St Leonards, NSW 2065

HOLMES|ST.CLAIR

Sold Apartment

Monday, 14 August 2023

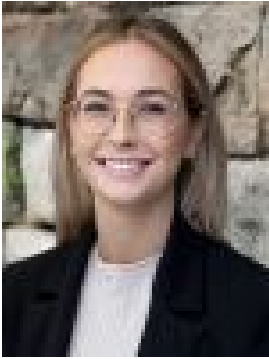
9-A503/21 Canberra Avenue, St Leonards, NSW 2065

Bedrooms: 2

Bathrooms: 2

Parkings: 1

Type: Apartment



Emma Bell

0434278272

\$1,635,250

Named after the park that runs along its eastern side, The Newlands is almost completely surrounded by nature – with lush bushlands just across the road, and an internal 'Green Spine' providing a private park running through its centre. Just ten minutes' walk from bustling central St Leonards, with its many amenities and transport links, the design for The Newlands connects these two environments in a beautifully considered, cohesive way. Comprising five low-rise buildings, The Newlands is unique in its scale and singularity. The architectural vision is to create a neighbourhood that's sustainable and permeable; seamlessly linking the urban bustle of St Leonards with the bushland corridor of Wollstonecraft. Landscaping is a defining feature of The Newlands, with the buildings surrounded by lush green planting on all sides. The planting language of The Newlands reflects the adjacent bushland, with boardwalks lacing through the buildings above existing tree roots and cascading water echoing the flow of Berry Creek via the on-site water feature and swimming pool. The Newlands features an abundance of private residential amenity including:- A resort-style outdoor swimming with Lounge deck- The Newlands 'Green Spine' – a 5,700m² private oasis offering elevated boardwalks, nature trails, Kids Discovery Zone & the future 'Pocket Park'- Outdoor gym and wellness space including sauna- Rooftop Garden Spaces including BBQ/dining area- Completely pet-friendly With a mix of 1, 2 and 3 bedroom apartments and 3 bedroom Garden Terraces – the lines between exterior and interior are somewhat blurred at The Newlands. Carefully chosen natural materials define the interior design, with large pieces of natural stone and streamlined timber joinery bringing a sense of warmth throughout and inviting the outside in.