

9 Ambleside Crescent, Berwick, Vic 3806



House For Sale

Tuesday, 30 April 2024

9 Ambleside Crescent, Berwick, Vic 3806

Bedrooms: 3

Bathrooms: 1

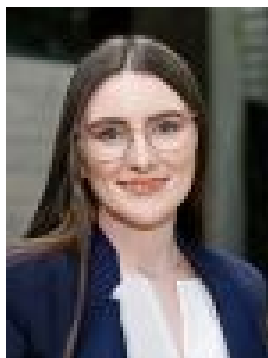
Parkings: 2

Area: 351 m2

Type: House



Noah Rezaie
0477799015



Melissa Wilson
0395878881

\$639,000 - \$699,000

Nestled in the serene neighbourhood of Berwick is an enticing opportunity for those seeking a harmonious blend of suburban tranquility and urban convenience. This meticulously maintained property exudes charm and character, offering a haven of comfort and style. Situated in a prime location, residents will enjoy easy access to Berwick Village, schools and parks, making it an ideal home for families or investors. This property has so much on offer, including:

- Three bedrooms, all fitted with built in robes
- Open plan kitchen features built-in-oven, stovetop and dishwasher and a pantry
- Generous front living area and a dining area adjoining the kitchen
- Bathroom features a bathtub, shower and a separate toilet
- Laundry features a cupboard and external access
- Reverse Cycle split system will keep you comfortable year round
- Fresh paint throughout and hard wood floors
- Solar panels will help to reduce utility bills
- Brand new spacious decking off the dining area, provides the perfect space for entertaining with a grass area for kids/pets and a shed
- Oversized single car remote controlled garage

Enjoy the premier location of this property with many of the essential amenities conveniently located. Many great schools are nearby including Berwick Lodge Primary School is a 14 minute walk, St Margaret's Grammar, Nossal High School and Chisholm Berwick are just a 5 minute drive. Your shopping needs will be met with Berwick village a 15 minute walk, while Westfield Fountain Gate is a 6 minute drive away. Bus stops are located just around the corner, Berwick Train Station is a 4 minute drive, Casey hospital is a 5 minute drive, while access to the Monash Freeway is close by and easily accessible.