

9 Ashby Street, Dudley, NSW 2290

Sold House

Friday, 15 March 2024

9 Ashby Street, Dudley, NSW 2290

Bedrooms: 4

Bathrooms: 2

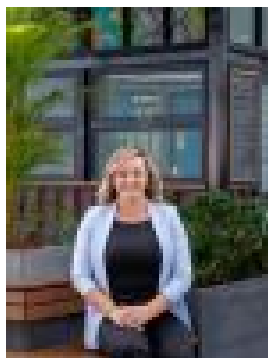
Parkings: 2

Area: 681 m2

Type: House



Peter Shiels
0422479552



Natalie Francis
0423606510

\$1,700,000

Nestled in the heart of Dudley, just moments away from the serene shores of Dudley Beach, 9 Ashby Street beckons with its enchanting allure. A testament to coastal living at its finest, this two-storey brick abode commands stunning ocean vistas, capturing the essence of seaside tranquility. Step inside to discover a haven of comfort and style, where four bedrooms offer sanctuary whilst multiple indoor and outdoor living spaces invite relaxation and entertainment. Whether it's a lazy afternoon by the crystal-clear blue pool or a cozy evening indoors, every corner of this residence exudes warmth and hospitality, creating an idyllic retreat for the entire family to cherish.

Property Highlights:- Two-storey 4 bedroom brick home sitting on approx. 680m² slightly sloped block - Ocean views from kitchen, dining, living and outdoor deck - Carefully thought out split-level floor plan offering open living, dining, and kitchen- Spacious sleek white kitchen featuring stone countertops, electric stove top, and oven- Tiled entry flows through to the kitchen, dining and living meeting plush wool carpets in the lounge and bedrooms- Generously sized main bathroom with shower, bath, and separate w/c- Beds 1, 2, and 4 offer large robes - Linen press on entry-level providing ample storage solutions- Undercover entertaining area on the ground floor that flows out to the pool area- Expansive crystal clear inground pool complemented by a spacious cabana - Large carpeted lounge and rumpus on the ground floor- Second bathroom on ground floor with shower and w/c- Under-stair storage- Attached double car drive-through garage and workshop with ample storage areas- Multiple living and sitting areas- Fully fenced backyard- A short 1-minute drive to Dudley Beach or a few minutes walk- A short 1.2km drive to Whitebridge shops and cafes- A short 3.6km to the hustle and bustle of Charlestown Square providing ample shopping solutions and restaurants- Zoned for the popular Dudley Public School and Whitebridge High School