

9 Bethany Way, Mickleham, Vic 3064



House For Sale

Tuesday, 30 April 2024

9 Bethany Way, Mickleham, Vic 3064

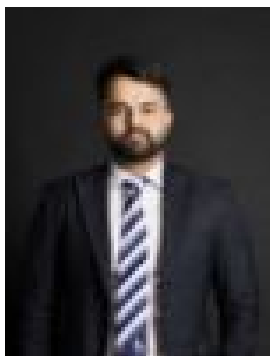
Bedrooms: 4

Bathrooms: 2

Parkings: 3

Area: 648 m2

Type: House



Jatin Mehta
0426973800

Ex-Display Home with Double Frontage

Presenting 9 Bethany Way, Mickleham - a residence of unparalleled spaciousness set on an expansive 648m² block. This impressive abode seamlessly marries grandeur with practicality, epitomizing refined family living. The extended double garage transcends mere parking, offering an additional expanse ideal for a workshop, supplementary storage, or versatile utilization. Boasting 4 bedrooms, including a master ensuite, and 2 distinct living areas, the residence exudes an aura of lavish comfort. Beyond, a capacious alfresco area harmoniously converges with the immense backyard, setting the stage for seamless outdoor gatherings. Nestled within a prestigious Mickleham precinct, surrounded by an array of impeccably styled residences, this property radiates an air of sophistication. It affords immediate proximity to esteemed educational institutions such as Mickleham Primary School, Newbury Primary School, Hume Anglican Grammar, Mother Teresa School, and Mount Ridley P-12 College. With Merrifield City Shops and Craigieburn Central conveniently accessible, shopping and entertainment needs are effortlessly met. Furthermore, a mere 20-minute drive to Tullamarine Airport and convenient passage to Melbourne CBD via the Hume Freeway solidifies the property's strategic location. From its meticulously crafted layout to its enviable position, 9 Bethany Way stands as a testament to contemporary elegance and luxurious family living. Disclaimer: Ex display home. Property Features:- Landscaped Gardens- Alarm System- Walk-in Pantry- Evaporative Cooling & Ducted Heating- Undercover Decking- 2.5 Car Garage- 900m Stainless Steel Appliances- SS Dishwasher- Stone Bench Tops This property is listed in conjunction with Daniel Lock from Group Real Estate. Due diligence checklist - for home and residential property buyers - <http://www.consumer.vic.gov.au/duediligencechecklist>