

# 9 Claret Ash Close, Toronto, NSW 2283



## Sold House

Tuesday, 9 January 2024

9 Claret Ash Close, Toronto, NSW 2283

Bedrooms: 4

Bathrooms: 3

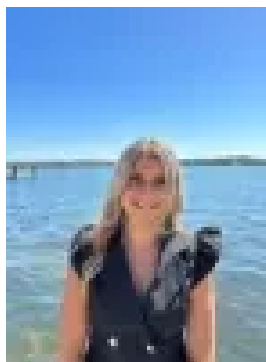
Parkings: 3

Area: 1266 m2

Type: House



Kristy McCabe  
0249596577



Sarah Dutch  
0249596577

**\$940,000**

Private family oasis - prestigiously located - hidden off the street and bordered by reserve offering uninterrupted sweeping views as far wide as Mt Sugarloaf & Charlestown. Multiple indoor living zones - large fully enclosed entertainment area. Plenty of yard for kids to play, pets to roam and still plenty of room for a pool. All this on a 1266m<sup>2</sup> block.\* Sprawled over 2 levels the only thing this home needs is a new family\* 4 generous sized bedrooms all with built-ins plus a separate study\* The primary suite features a private balcony with picturesque views - an ensuite, walk in robe & built-in\* Formal lounge and dining zones\* Open kitchen & family dining area stepping into the large living room \* Fully enclosed entertainment area off the kitchen and family dining area - perfectly placed for entertaining\* Separate family room on bedroom level \* Amongst this homes many features: ducted air-conditioning, ceiling fans, ducted vacuum system, solar electricity, natural gas hotwater, gas cook top & oven\* Triple garage plus access into the yard - plenty of space to park the van, boat, trailer etc \* Established gardens, fully fenced yard with access through to rear reserve\* Approx. Rental potential \$700.00 to \$730.00 per week\* 3.3km to Toronto CBD, café & restaurant strip\* Floor plans available upon request\* Call now for a private inspectionFrom all of us at Ray White Toronto - Warners Bay - Wangi Wangi - North Lake Macquarie, we wish you every success in the search for your next property. If you would like more detail on this or to chat about one of the many other properties we have available please call or email us today..DISCLAIMER: We have in preparing this document used our best endeavours to ensure the information contained is true and accurate, but accept no responsibility and disclaim all liability in respect to any errors, omissions, inaccuracies or misstatements contained. Prospective purchasers should make their own enquiries to verify the information contained in this document