

9 Dietrich Close, Rutherford, NSW 2320



Sold House

Wednesday, 13 March 2024

9 Dietrich Close, Rutherford, NSW 2320

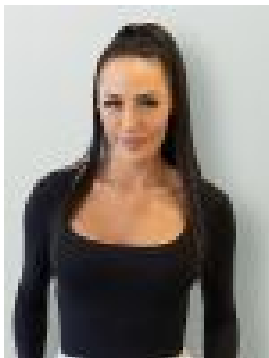
Bedrooms: 4

Bathrooms: 2

Parkings: 2

Area: 613 m²

Type: House



Celeste Rodwell
0400175419

Contact agent

With its quiet cul-de-sac address affording peace and its location affording convenience, this quality-built home not only presents fantastic lifestyle benefits but is also graced with a full fleet of modern appointments, including a family-focused floorplan. Open-plan living is complemented by a separate lounge room, four bedrooms are easily supported by two bathrooms, and the kitchen has everything you need to create easy meals or a banquet for family and friends. Living is easy here with split-system air-conditioning for comfort in every season, a good-sized yard to draw the kids outdoors, and a lock-up double garage to keep the cars safe and secure at night. This home provides everything a young buyer through to a family or the retiree needs to thrive. Ramping up appeal, the heart of Maitland can be reached in less than 10 minutes. Here you'll find a celebrated dining scene, great shopping and entertainment, along with all the beauty of the mighty Hunter River and riverside cafes. Closer to home you'll find Rutherford's popular super-stores and a buzzing local shopping centre plus a public and high school with bus transport within easy reach. - Modernly appointed family home sitting on a bumper 613sqm landholding - A separate lounge offers a private escape from the open plan living zone - Gas kitchen with great storage/prep areas and modern appliances incl. dishwasher - Bedrooms are generously sized and all feature robe storage and cooling ceiling fans - Bright, airy and full main bathroom, master ensuite, laundry with outdoor access - Covered alfresco escape basks in a north-facing position and merges with the lawn - Great backyard for play or relaxation - it's secure, lawn-covered and easily maintained - Internal access from the garage for added convenience, driveway parking available - Peacefully positioned toward the end of a cul-de-sac where children still play freely - Parks and playgrounds nearby; central to link roads connecting major travel routes