

9 Eldine Court, Grovedale, Vic 3216

Sold House

Thursday, 14 September 2023

9 Eldine Court, Grovedale, Vic 3216

Bedrooms: 4

Bathrooms: 2

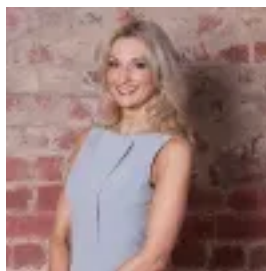
Parkings: 2

Area: 681 m2

Type: House



Candice Costoso
0431577870



Egle Skridulis
0352232040

\$701,000

Located a short walk to Grovedale College, Nazareth Primary School and Grovedale West Primary School, this family residence is bursting with potential! With the freshly painted interior, new blinds and updated carpets and kitchen. The family-friendly layout features two living zones, master bedroom with walk-in robe and ensuite, and three additional bedrooms all with built-in robes, serviced by a central bathroom and separate W/C. At the heart of the home is the updated, solid timber kitchen with walk-in pantry, an abundance of storage and dishwasher. Overlooking the backyard, pergola and adjacent, large dining room, this home is ideal for the young and growing family. To the rear of the yard is a Colorbond shed which could be utilized for storage or the perfect home studio/workspace. In addition to this is an added-on shed, providing ample storage for the home and garden. Split system heating/cooling in living room plus gas heater in the rumpus room. Burdoo Recreation Reserve and Heyers Road shops and Community Centre are also within walking distance, while the Waurm Ponds Shopping Centre and Waurm Ponds Train Station are conveniently close by. Easy access to Deakin University (Waurm Ponds) and Epworth Hospital is a huge plus, while the Ring Road keeps you connected to both Melbourne and the Surf Coast.- 681sqm (approx.)- Four bedrooms- Split system heating/cooling- Large rumpus room- Close proximity to Grovedale College, Nazareth Primary School and Grovedale West Primary- Walk to Heyers Road Shops, Community Centre and Burdoo Recreation Reserve