

# 9 Hope Street, Laidley, Qld 4341

## House For Sale

Monday, 10 June 2024

**NGU** REAL ESTATE  
LIFESTYLE

9 Hope Street, Laidley, Qld 4341

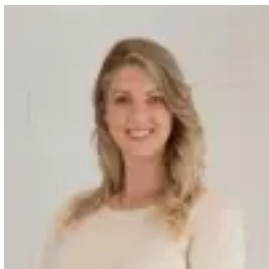
**Bedrooms: 4**

**Bathrooms: 1**

**Parkings: 8**

**Area: 1336 m2**

**Type: House**



Amie Tarrant  
0753595808

## OFFERS OVER \$389,000

ACT NOW to be the proud owner of this incredible property, offering a whopping 1336SQM block with endless possibilities! If you are looking for an opportunity for an affordable property that you can add value to, in an unbeatable location with spectacular views, this one will be sure to impress! Future Development Potential Awaits! This enormous block lends itself toward future development as it is extremely close to major conveniences and completely flood free, savvy investors will recognise the huge potential here (STCA). Further to this, rarely do you find a workshop of this magnitude! With space for a whopping 8 cars, it's a haven for those who cherish their wheels or need a professional workspace right at home. There is a lockable space at the front plus a huge workshop area at the rear. The floor plan is generous with a layout that lends to 4 bedrooms, bathroom and open living areas. Embrace the property's character and charm with original weatherboard exterior, VJs and hardwood timber floor boards. There is a spacious kitchen and dining area – the perfect for entertaining friends and family. There is a bathroom located in the upper level plus a separate toilet and laundry downstairs for added convenience. Area Details:- Walk to Laidley Township with major conveniences including Laidley Hospital, Primary and Secondary Schools, grocery store, chemist, restaurant, cafes and so much more! - Minutes from major Laidley Sports Complex - 10 minutes to major growth corridor of Plainland with Bunnings, ALDI, Woolworths and other major retailers, with many more coming soon- 30 minutes\* to Ipswich CBD- Under 1 hour\* to Brisbane CBD - 50 minutes\* to Toowoomba CBD - 25 minutes to Amberley RAAF Base Don't let this chance slip through your fingers! This area is experiencing exponential growth, making it the perfect time to invest in your future and watch your investment flourish. Contact Amie today to arrange your inspection! \* Approximate STCA - Subject to council approval Disclaimer: All information provided is correct to the best of our ability. While we strive to ensure accuracy, we recommend that interested parties verify all details independently before making any decisions. Please contact the listing Agent for the most up-to-date and accurate information about the property.