

9 Jarrott Street, Chelmer, Qld 4068



House For Sale

Wednesday, 14 February 2024

9 Jarrott Street, Chelmer, Qld 4068

Bedrooms: 4

Bathrooms: 2

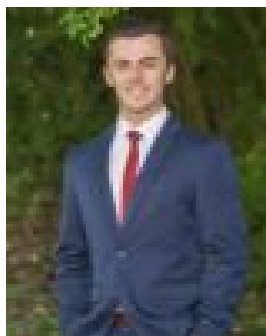
Parkings: 2

Area: 434 m2

Type: House



Douglas May
0410488110



William Smith
0409564124

Auction

ONLINE AUCTION 5.00pm Wednesday 6th March 2024 Go To:

<https://raywhitesherwood.com.au/watch-our-auctions-live> Experience easy family living in this beautiful home nestled in Chelmer's sought-after highside. Resting on a low-maintenance 434sqm block balancing indoor and outdoor living, the house caters to all the needs of the modern family in a peaceful, leafy setting. Stylish timber floors, sleek tiles and high ceilings adorn the open interiors, complemented by plantation shutters, ducted air-conditioning, and a large picture window framing the gorgeous garden courtyard. The ground floor flows seamlessly from living to entertaining, with a lounge and dining area spilling out to the undercover patio and sunlit wraparound terrace via bi-fold doors. Featuring a cosy alfresco fireplace and low-maintenance gardens creating greenery and privacy, families are offered a sublime indoor/outdoor retreat. Sure to impress the resident chef, the stunning stonotop kitchen provides modern practicality with large benchtops, a walk-in pantry, and Bosch appliances, including a gas cooktop. Continuing the functional floor plan is a downstairs media room, an upstairs lounge, and four bedrooms (three with built-in robes). The master suite is luxuriously designed with a walk-in robe and lavish ensuite featuring a freestanding bath and dual vanities. A second bathroom, guest powder room and laundry service the rest of the home. Property features:- Beautiful family home on an easy to maintain 434sqm block- Fully fenced with an electric gate to the double carport- Living/dining area unfolding to the patio and sunlit terrace- Stonotop kitchen with a walk-in pantry and Bosch appliances- Downstairs media room and upstairs living room- 4 upstairs bedrooms (3 with BIRs), 2.5 bathrooms and laundry- The master suite includes a walk-in robe and renovated ensuite- Ducted air-conditioning, ceiling fans and security screens- Outdoor fans and fireplace on the patio Residing in a scenic suburb within easy walking distance of Graceville Memorial Park, playgrounds, dog parks, riverfront walks, cafes, restaurants and Regal Cinema, families will love the lifestyle. Chelmer and Graceville train stations are 600m away, the local kindergarten is 200m from your door, children are minutes from Graceville State School, Christ the King, St Aidan's, St Peter's and Indooroopilly State High School, and Indooroopilly Shopping Centre is 4 minutes away. DISCLAIMER: Whilst all care has been taken to ensure that the information provided herein is correct, we do not take responsibility for any inaccuracies. Accordingly, we recommend that all interested parties should make their own enquiries and due diligence to verify the information. Any personal information provided to Cameron Crouch Property T/As Ray White Sherwood, will come under the terms set out in our Privacy Policy, which can be found here for your convenience: <https://www.raywhite.com/privacy>.