

9 Killara Circuit, Bacchus Marsh, Vic 3340



Sold House

Friday, 3 November 2023

9 Killara Circuit, Bacchus Marsh, Vic 3340

Bedrooms: 4

Bathrooms: 2

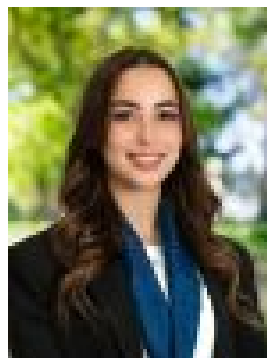
Parkings: 2

Area: 448 m2

Type: House



Shane Spiteri
0488980115



Izabel Dusik
0421833010

\$715,000

Welcome to the exquisite 9 Killara Circuit in Bacchus Marsh, a double-story home that offers a perfect blend of luxury and functionality. This stunning property, situated on a generous 448m² (approx) parcel of land, presents the opportunity for side access, providing added versatility and convenience. Nestled in the sought-after Underbank estate, this property enjoys a prime location, just 2.7km from Bacchus Marsh Train Station, providing direct access to Melbourne's Southern Cross Station in approximately 35 minutes. Exciting developments are on the horizon, with existing stables set to be transformed into public spaces, accompanied by the establishment of sporting facilities, a community clubhouse, and enhanced connections to the town centre. This property offers a lifestyle of luxury, comfort, and convenience in the thriving Underbank estate. As you step inside this elegant residence, you're greeted by a well-designed ground floor layout. The front lounge room and separate study, the laundry complete with a linen press and external access, adding practicality to everyday life. A separate powder room, along with the dining area and a spacious living area, create an inviting and versatile living space. The heart of the home is undoubtedly the beautifully designed kitchen, featuring 40mm waterfall stone benchtops, 900mm stainless steel appliances, walk-in pantry, and a window splashback that frames stunning garden views. Beautiful pendant lighting in the kitchen and dining zones. Heading upstairs, a large retreat space provides flexibility for various lifestyle needs. The spacious master bedroom is truly a retreat, offering a walk-in robe and an ensuite, adorned with double roller blinds and quality floor-to-ceiling curtains. The three remaining bedrooms are spacious, with one featuring a walk-in robe and the others equipped with built-in robes. A central bathroom on the upper level ensures convenience and comfort for all residents. All bedrooms fitted with a ceiling fan. This property features stacker doors that open to a concreted undercover patio including a ceiling fan. Here, you'll find a BBQ connected to natural gas, with the capacity for additional gas connections. The backyard also boasts a large garden shed and lush green grass, making it a haven for relaxation and outdoor activities. This property comes loaded with modern features to enhance your quality of life. You'll enjoy evaporative cooling and ducted heating throughout the entire home, with a split system installed in both the master bedroom and the main living area for individual climate control. Double roller blinds throughout the home combine style and practicality. Additional features include under stair storage and a total of 14 solar panels to help reduce energy costs and minimize environmental impact. Constructed in 2021 by Evolve Living, this 33.4-square home is a testament to contemporary design and quality craftsmanship. A double secure garage with internal access and rear roller door access ensures both convenience and security for your vehicles and belongings. (Photo ID is Required at all Open For Inspections) At YPA Bacchus Marsh Our Service Will Move You. **DISCLAIMER:** Every precaution has been taken to establish the accuracy of the above information but it does not constitute any representation by the vendor/agent and agency.