

9 Meaford Street, Mickleham, Vic 3064

CHWYLA

House For Sale

Wednesday, 22 May 2024

9 Meaford Street, Mickleham, Vic 3064

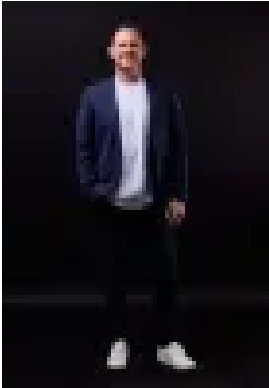
Bedrooms: 3

Bathrooms: 2

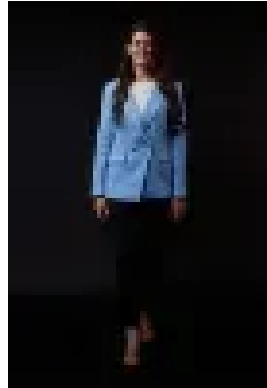
Parkings: 1

Area: 276 m2

Type: House



Paul Chwyla
0386009995



Stacy Richards
0386009995

\$550,000 - \$590,000

Make more of : 276m² 2 Corner block 2 Three bedrooms 2 Two bathrooms with stone benchtops 2 Two living areas 2 Garage 2 Security door 2 Security system 2 Feature raked ceilings with square set cornices 2 9ft ceilings 2 Downlights 2 Floating floorboards 2 Double blinds 2 40mm stone kitchen benchtops with waterfall 2 Significant kitchen cabinetry 2 Built-in wine rack 2 900mm gas cooktop 2 600mm oven 2 Dishwasher 2 Huge walk-in pantry 2 Master with walk-in robe 2 Two bedrooms with built-in robes 2 Refrigerated cooling and heating 2 Ceiling fan 2 Low maintenance landscaping with synthetic lawn 2 270m to Annadale Park and Playground 2 270m to Latchford Drive bus stop 2 800m to Waratah Park 2 2km to Marnong Winery 2 2.5km to Merrifield shops 2 The initial appeal – Very low maintenance living, with not much to manage in the front and synthetic turf out the back, your feet will actually be up on the weekend! Speaking of spending Saturday and Sunday relaxing, you'll be a 4ish minute walk to the park, and a 3ish minute drive to Marnong Estate Winery. The main attraction – A really high spec, quality build with a long list of features. You'll be all about the super high statement raked ceilings with square set cornices, the luxury of refrigerated cooling and having two separate living zones, and an XXL walk-in pantry. Your journey here starts this Saturday.