

**9 Mitchell Road, Lilydale, Vic 3140**



**House For Sale**

Friday, 10 May 2024

9 Mitchell Road, Lilydale, Vic 3140

**Bedrooms: 5**

**Bathrooms: 3**

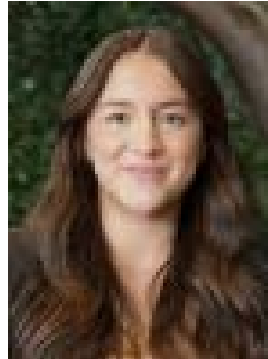
**Parkings: 6**

**Area: 1279 m2**

**Type: House**



Phil Licciardi  
0408808108



Victoria Carrabbia  
0487277030

**\$1,310,000 - \$1,410,000**

If you are looking for a property with the lot, this one's got it! Fully renovated, fabulously located and flaunting incredible entertaining options and parking, this 5-bedroom residence on approximately 1,279sqm is a private oasis for the large family, tradesperson and car enthusiast. Conveniently positioned, it is situated less than 3 kms from Lilydale and Mount Evelyn's vibrant townships, offering easy access to bus stops, excellent local shops and eateries, malls, schools, great community and recreational facilities, Lillydale Lake and Lilydale Train Station.- Securely accessed via a double-gated horseshoe driveway, there is substantial room for all of the family's cars, work and leisure vehicles. This includes an auto-gated double carport with an EV charger, and a huge workshop with a gym/office and accompanying wash closet- The onsite residence, fronted by two double glazed bay windows, has undergone an extensive transformation over the years, evolving and expanding to cater to the growing needs of the family- Two interconnecting living zones can be found within, including a sprawling lounge and sunken dining area with surround sound speakers, and a billiards room with a bar area- A fully equipped kitchen with an accompanying dining area is anchored at the heart of the residence, featuring a long breakfast ledge- Five robed bedrooms, including two that link, can also be found within the residence- The master suite boasts a walk-in wardrobe and a luxurious en suite that stars a large spa bath, twin-head shower, twin-basin vanity, toilet and a heated towel rail. The remaining rooms share the use of a bathroom with a freestanding bathtub, twin-head shower, a single-bowl vanity and a heated towel rail- Complementing the home's internal footprint, is a long laundry room with generous storage and clothesline access- Outside, manicured, low maintenance gardens frame inviting spaces that were designed for fun and entertainment, including an enclosable alfresco area with the works- For leisure and exercise, the heated indoor swimming pool is sure to excite. It boasts bi-fold doors leading to a sitting area plus an adjacent pool house with a kitchenette and a bathroom- A long list of inclusions further enhances this property, such as an alarm system, brand new carpet, ducted heating and refrigerated air conditioning, ceiling fans, ducted vacuum, 42 solar panels with inverters for 3-phase supply and 415-volt 3-phase power supply to the home