

9 Rushall Street, Pymble, NSW 2073



Sold House

Sunday, 13 August 2023

9 Rushall Street, Pymble, NSW 2073

Bedrooms: 5

Bathrooms: 3

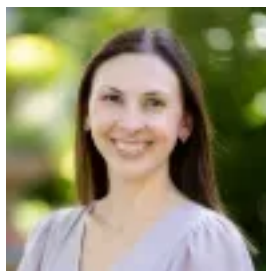
Parkings: 2

Area: 923 m2

Type: House



David Walker
0294897474



Belinda Edwards
0294897474

Contact agent

Elegance, exclusivity and Southern Highlands charm unite in this exquisite 1920's orchard home that boasts endearing street appeal and is stunning. Poised high-side on a manicured 923sqm block which is gated and secure with generous lawns for the kids to play on, its recent renovations have further added to its allure. Exuding class and timeless grace, the interiors are a showpiece in classic style with elegant formal rooms and casual living all opening out to the expansive entertainer's decks. A brand new kitchen and bathrooms channel the chic provincial country feel and the separate fully self-contained studio provides options for the in-laws, guests or a home based business. Perfect throughout, this home will satisfy those looking to move straight in, enjoying walk to the station, shops, bus and schools convenience.

Accommodation Features: * Superb dark stained timber floorboards and high ceilings * Elegant formal lounge room, gas fireplace and French doors * Formal dining with stunning wallpaper, ducted air conditioning * Casual living with custom cabinetry, French doors to the deck * Near new provincial kitchen, freestanding Smeg cooker * Island bench, renovated laundry with storage and underfloor heating, wine cellar * Two beautiful luxury renovated bathrooms with underfloor heating, one with bath * Four bedrooms split over the two levels, walls of built-in robes * Large upper level master with window seat and generous robes * Separate self-contained studio/5th bedroom with bathroom * Substantial in roof storage areas, designer lighting and curtains External Features: * Gated and secure from the street, electric driveway gates * Stunning manicured gardens, level lawn area * Separate and versatile self-contained studio over the garage * Expansive decks both front and back, rear deck with skylights * Double lock up garage with storage areas

Location Benefits: * 190m to the 577P and 579 bus services to Turramurra Station and village, schools including Pymble Public School and Pymble Station * 400m to Pymble Public School * 550m to Bannockburn Oval * 850m to Princes Street shops and dining * 850m to Irish Town Playground * 1km to Northside Montessori School * 1.5km to Sacred Heart Catholic Primary School * 1.7km to Pymble Station * 1.8km to Turramurra Station and village * Close to Pymble Ladies Collage, Abbotsleigh & Knox Grammar

Contact: David Walker ☎ 0414 184 911 Belinda Edwards ☎ 0451 672 977 Disclaimer: All information contained here is gathered from sources we believe reliable. We have no reason to doubt its accuracy, however we cannot guarantee it.